

Friends of Baxter State Park

President's Column

by Barbara Bentley

On the Summer Solstice, outfitted in a long skirt, ankle-high shoes, pleated blouse, and wide-brimmed hat, I'll be joining others to climb Katahdin, honoring by our garb the 19th century women mountaineers who blazed the way to many a summit in Europe, Latin America, and here in the USA, wearing skirts!

When Elizabeth Oakes Smith climbed Katahdin in 1849, she started on foot at the Hunt Farm on the East Branch of the Penobscot. Her party took eight days to make the trip, via the shores of Katahdin Lake, then Avalanche Brook, up to the summit and back. We'll park our cars at Roaring Brook and set off for Chimney Pond, then up the Saddle to the summit. In the account of her Katahdin adventure, Ms. Smith said a trip to the mountains of New Hampshire was "a summer-day excursion, a baby play compared to Katahdin." What would she say about our heavily worn, blazed trail? Piece of cake, even in a long skirt!

I've been thinking a bit about roads and how they affect wilderness areas and our experience of them. In May, Howard Whitcomb, Bill Bentley, and I dug out our passports and traveled to New Brunswick to speak at the Annual Meeting of the Friends of Mt. Carleton. We stayed in the recently renovated Bathurst Wilderness Camps. Now in a Provincial Park, these historic camps, situated on a chain of lakes, were reached only by water (and a few portages) in the days when Babe Ruth and Eddie Collins fished there. Today, highways lead to the edge of the Park and two-lane gravel

Continued on p. 2

Forever Wild

NEWSLETTER OF THE FRIENDS OF BAXTER STATE PARK
SUMMER 2010 VOL. 9 NO. 3



Clockwise from top:
Charlie Jacobi, Sally Daggett, Mike Stillman, Donna Betts, and Lindsay Bourgoine joined the Board of Directors at Friends of Baxter State Park's 10th Annual Meeting in April.

- Photos © Bill Bentley & Lindsay Bourgoine

Friends Celebrates 10th Anniversary at Viles Arboretum in Augusta

Record attendance and a broad range of activities and presentations made for a very celebratory tenth Annual Meeting of the Friends of Baxter State Park! On Saturday, April 24th, more than five dozen members elected several new members to the Board of Directors. Those at the gathering also heard about changes in the treeline occurring at Katahdin and other mountain areas in New England due to climate change.

The keynote presentation was by Kimberley S. K. Beal. A recent recipient of a master's degree from the University of Vermont, she earned an award from the Waterman Fund for her essay on "Climate Change at the Top," which ap-

peared in the journal *Appalachia*. Ms. Beal showed slides, comparing historic photos to contemporary ones, illustrating dramatic changes in the location of mountain treelines that have been occurring during the past century due to warming temperatures at Katahdin and other alpine areas in northern New England.

The Friends of Baxter State Park elected five new members to the Board of Directors:

- Donna Betts of Scarborough is Development Director for Hospice of Southern Maine. An avid hiker, she recently served as a Director on the Board of the Scarborough Land Conservation Trust.

Continued on p. 3



**Friends
of
Baxter State Park**

BOARD OF DIRECTORS

- Barbara Bentley, President
- Howard Whitcomb, Vice President
- Denise Clavette, Secretary
- Al Howlett, Treasurer
- Henry Beeuwkes
- Donna Betts
- Lindsay Bourgoine
- Anne Huntington
- Sally Daggett
- Charlie Jacobi
- Ralph Pope
- Jym St. Pierre
- Mike Stillman
- Milt Wright
- Chaitanya York

HONORARY DIRECTORS

- Eric Baxter
- Dean Bennett
- Buzz Caverly
- Alexandra Conover
- Donn Fendler
- David Getchell, Sr.
- Leon Gorman
- Jon Lund
- Libby Mitchell
- Chellie Pingree
- Kay Rand
- Neil Rolde
- Rupert Baxter White

Newsletter Editor

Barbara Bentley

Administrative Manager

Rosemary Hastings

Volunteer Coordinator

Laurie Rich

PO Box 609

Union, ME 04862-0609

www.friendsofbaxter.org

Friends of Baxter State Park is an independent citizen group working to preserve, support, and enhance the wilderness character of Baxter State Park, in the spirit of its founder, Governor Percival Baxter.

President's Column *Continued from p. 1*

roads traverse the area, providing access for every type of motor vehicle imaginable. A road goes almost to the highest mountaintop, and plans are in the making for more roads.

How lucky we are to have had Percival Baxter's foresight to say "no more roads" and the Deeds of Trust to support the protection of the wilderness character of the Park. There are no generators in the campsites and no zip-lines on mountain slopes. Why? Because Baxter said no.

While the woods in northern Maine, like those across the border, are laced with logging roads necessary for modern timber harvests, Baxter State Park is blessed with a buffer of conserved lands on its boundaries that protect the animal habitat, the water and air quality, and the viewscape of the Park. We don't have to start by canoe in Greenville as Thoreau did to get to the Park, but once we are there, many things are pretty much the same as they were when he arrived at Abol Falls and took his hike to Katahdin. No, they are not going to widen the Park's Tote Road. And yes, the 10 and 20 mph speed limits are enforced by radar. Enjoy the ride.



Founding FBSP President John Neff receives from President Barbara Bentley thanks for his continued support and an image of Doubletop to commemorate his ascent last fall, new knee and all.
- Photo © Bill Bentley

How to Contact Us:

Rosemary Hastings, Admin. Manager
28 Serenity Lane, Hope, ME 04847
207-785-2641
rosehast@tidewater.net

Barbara Bentley, President
546 Hatchet Mt. Rd, Hope, ME 04847
207-763-3014 or 207-542-5207
barbarabentley@tidewater.net

Laurie Rich, Volunteer Coordinator
207-862-6580 or 207-249-5023
friendsofbaxtervolunteer@gmail.com

Letter to FBSP Members

Your continued membership support helps to insure our success in implementing Friends' mission and in supporting the many projects we undertake in the Park. Quite simply, our success is dependent on you.

Here's just one example of your membership at work. Given our collaboration with Park staff, your membership is helping to a make a considerable difference this year, especially with the miles of trail improvements that will be completed. This includes work by the Maine Conservation Corps through the Recreational Trails Program (RTP) grant that we secured and work by volunteer FBSP chainsaw crews that we organize. Members of Friends also participated in the Trail Steward training offered by the Park and then maintain an assigned trail throughout the season.

You can hike in the Park this year and enjoy its wonders with the satisfaction that you and your organization helped improve the trails that you and thousands of other people are hiking. You make a difference for the Park. If your membership has expired and you haven't had the opportunity to renew it, there is still time.

- Chaitanya York,
Chair of Membership Committee

Membership Matters

Membership renewal notices were sent out on March 1, 2010. THANK YOU to all who have renewed so far. We have 330 current members and invite the balance of our 569 members to renew soon.

Current Membership categories:

Governor Baxter Society	4
Katahdin Club	8
Knife Edger	12
Hamlin Peaker	41
Sponsor	77
Family	112
Individual	76

Distribution of entire membership of 569 by State (or province):

Maine	415
New England	70
NY-NJ-PA	30
All other States	50
Canada	4

FBSP Annual Meeting

Continued from p. 1

- Lindsay Bourgoine of Falmouth has completed eight winter climbing trips in Baxter State Park. She may be the youngest female to summit Katahdin in winter, at 15. Lindsay works for the Appalachian Mountain Club on land conservation policy and advocacy.
- Sally Daggett of Portland grew up hiking in Acadia National Park. When not backpacking in Europe or the Canadian Rockies, she practices municipal law. She previously served on the FBSP Board for six years and as Secretary of the Board.
- Charlie Jacobi of Bar Harbor is a natural resource specialist at Acadia National Park. He previously served on the Board of Friends of Baxter State Park for eight years, including three years as President.
- Mike Stillman of Farmington has been a trail crew leader in Baxter State Park as well as in other areas for the Maine Conservation Corps, Maine Appalachian Trail Club, National Park Service, and U.S. Fish and Wildlife Service. Mike feels the Park and the people who work there helped him gain the confidence, management skills, and logistical training he uses every day. He would like to see Friends increase the size and age diversity of our membership and help provide to other young people the same opportunities that he had at a young age.

Two people were re-elected to another term on the Board.

- Barbara Bentley is a retired languages teacher and Chair of the Board of Selectmen of the Town of Hope. A Founding Member, she served as the first Administrative Manager for Friends of Baxter State Park and has been President of the organization for the past three years.
- Chaitanya York has served as President of the Maine Conservation School, Executive Director of the Maine Organic Farmers and Gardeners Association, Director of the Maine Department of Agriculture's Division of Resource Development, and Founding Director of the Common Ground Country Fair.

Several retiring board members were recognized for their service: Chip Ahrens of Yarmouth, Lester Kenway of Bangor, Jonathan Milne of Sidney, Ken Spalding of Wayne, and Rex Turner of Augusta.

Officers elected included Barbara Bentley of Hope, President; Howard Whitcomb of Georgetown, Vice President; Al Howlett of Yarmouth, Treasurer; and Denise Clavette of Scarborough, Secretary.

The meeting also included an up-date from Baxter State Park Naturalist Jean Hoekwater, poetry readings by Kristen Lindquist, an art display by Evelyn Dunphy and Michael Boardman, and the screening of a new film by NYU film student Caitlyn Coady about the Park called *Forever Wild*. Friends co-sponsored with Viles Arboretum a bird walk led by Kristen Lindquist and Jay Adams early in the morning on the grounds of the Arboretum. After the meeting, many participants went on hikes to local conservation areas, some to Vaughan Woods and others to Mt. Pisgah. A splendid soup and sandwich lunch was provided by Board Director Anne Huntington and members of her family.

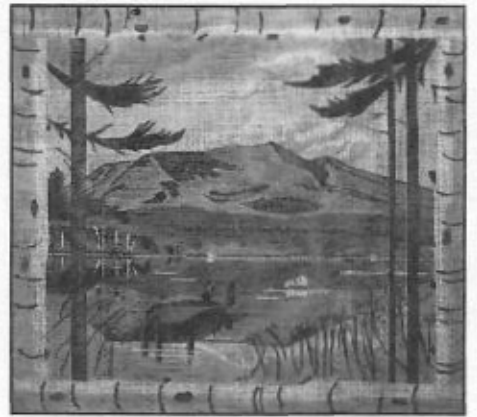
— Howard Whitcomb and Jym St. Pierre

Our Readers Write...

Wilderness and Parks...

Thank you for sending your notes about the trip to Mt. Carleton; I can well imagine that the folks up in New Brunswick could learn a lot from FBSP. On one hand, I hear wonderful things about Canada's National Parks; but I am very uninformed on the Provincial Parks, other than the few I know in Nova Scotia. The workshop that I'm teaching in NS borders the Tobecoic Wilderness area, and I am very interested in learning more about it, and if it indeed does seem to be "wilderness".

— Evelyn Dunphy, W. Bath, ME



Available at North Light Gallery, hand painted needlepoint kits feature Katahdin view.

— Photo © Marsha Donahue

Katahdin Needlepoint...

This is the first Katahdin hand-painted needlepoint canvas, painted on #12 canvas with the yarn included, and it sells for \$95 plus tax. Can you think of other subject matter that you might like? Canvases will also be in #10 size. The size of this one is 15" x 17" with about an inch of blank canvas around the image so that you can match your decor.

— Marsha Donahue,

North Light Gallery, Millinocket

Baxter Park Wilderness Fund...

There is news. The Trust for Public Land contributed another \$452,000 to the Baxter Park Wilderness Fund last week. If I remember correctly, this is in effect a partial payback for the loan

Continued on p. 6



View from outcrop on Mt. Sagamook in Mt. Carleton Park shows Big and Little Nictau Lakes and the varied patterns of clear cutting in the neighboring lands. — Photo © Bill Bentley

Looking back...

A Painful Reminder of Knife Edge Danger

The recent Baxter State Park rescue of a hiker who chose to take a short cut off the marked Knife Edge Trail was a painful reminder to many who love Katahdin of the dangers that may result from leaving any designated trails, especially along the iconic Knife Edge. For many it brought back the memory of one of the notable tragedies in that area of the Park. In October of 1963, two women, Helen Mower and Margaret Ivusic, both from Massachusetts, were returning from the summit of Katahdin along the Knife Edge to their campsite at Chimney Pond. Part way across, Mrs. Ivusic chose to leave the marked trail, thinking she could more easily descend off the narrow trail down the steep rocky slope directly to the campground. Mrs. Mower continued on the marked trail.

After hearing her friend cry out that she was trapped on a ledge, Mrs. Mower hurried her descent down the Dudley Trail to seek help. Ranger Ralph Heath attempted to reach Mrs. Ivusic before his fall without success. He continued his efforts



Howard Whitcomb, with Bill and Barbara Bentley, visited Ralph Heath's grave in the cemetery on Golden Ridge Road in Sherman, in early May.

— Photo © Bill Bentley

into the night and did finally reach her. By morning, however, a severe snow storm had enveloped the whole mountain, trapping both on the ledge. The storm raged on, and the rescue operation continued. After a heroic week-long effort to reach the ledge, the rescuers, by then overwhelmed by sadness, abandoned the search. Both Heath and Ivusic lost

their lives. [Further details are available in my book or in the official rescue report].

Ralph Heath's willingness to sacrifice his own life for another's is still celebrated, and his memory is still held in deep respect by Park personnel.

— John Neff,

Author of *Katahdin: An Historic Journey*

FBSP Members Attend International Appalachian Trail Annual Meeting at Shin Pond

High energy and enthusiasm characterized the Maine Chapter of the International Appalachian Trail's Annual Meeting at Shin Pond Village Campground on May 6th - 8th. The meeting was held in association with the Maine Lumberman's Museum in Patten, which featured an exhibit of Dexter native Bert Call's photographs of the north Maine woods, including Katahdin.



Author Simon Winchester confers with FBSP Board Member Howard Whitcomb (photo above) and with IAT President Walter Anderson (photo at right) at the meeting in May. — Photos © Bill Bentley

The highlight of the meeting was a keynote presentation by British author Simon Winchester on his forthcoming book, *Atlantic: A Biography of the Ocean*, due to be published by Harper Collins in November. Winchester, the author of 21 books, was a 2006 recipient of the OBE (Order of the British Empire) "for services to journalism and literature." He spoke of his long-standing fascination with the field of geology that has manifested itself in volumes such as *The Map that Changed the World*, *Krakatoa*, and *A Crack at the Edge of the World*. Winchester's interest in the International Appalachian Trail is a direct outgrowth of the Atlantic Ocean's plate tectonics origin. Winchester and his wife, Setsuko Sato, plan to return to Maine to climb Katahdin.

President Barbara Bentley and Bob Johnston of the State Geological Survey made a presentation on FBSP's Maine Youth Wilderness Leadership program that has been funded these past two years by the Quimby Family Foundation. Other presenters at the plenary sessions included Bart DeWolf (Ecological Inventory and Mapping of Elliotsville

Plantations Inc. Lands), State Forester Alec Giffen (Keeping Maine's Forests) and BSP Director Jensen Bissell (Recreational Opportunities on the Katahdin Lake parcel).

The meeting, organized by Walter Anderson and IAT Founder Dick Anderson, was attended by 60 individuals representing diverse groups with common interests in the Maine woods and the environment. Reports on progress in extending the IAT all the way to Morocco inspired some to sign up for a trip to Greenland in 2012 to get that leg of the trail under their belts.



Pitchin' In and Steppin' Out

Laurie Rich,
FBSP Volunteer Coordinator

207-862-6580 hm
207-249-5023 cell

friendsofbaxtervolunteers@gmail.com



Are you a VIP?

What a great start to the Baxter season! There have been three crews clearing blow-downs, nine volunteers getting the campgrounds ready for the season, and seven volunteers participating in the very first VIP event. The VIPs got together and made a huge dent in the Kidney Pond "to do" list. We stained new decking, trimmed bushes, removed moss from roofs, and painted window glazing. And we followed all that up with a cookout, sharing histories, stories, and work fun. (Did you know if moss is left on a roof long enough, trees will start growing in it?) Over 500 hours of volunteer time have been contributed. And there is more to come.

Before the rundown of great opportunities to volunteer, I'd like to tell you a story. During our VIP weekend, we met a man who is a retired executive. He was looking for some way to get involved and keep busy. One day, as he was searching the internet, he came across the Baxter State Park website. Seeing opportunities to volunteer, he sent in a volunteer application. He had never been to the Park, and yet he wanted to volunteer. Roger Jensen, who has incredible skills and willingness to lend a hand, spent the day with us and then went on to enjoy a day in the Park. We also met a couple who came to live and work in Maine after one trip up Katahdin and now want to give back to the Park.

Volunteer Opportunities 2010

July 10-11 – VIP (Volunteers in the Park): The North Branch Camps, an administrative facility used by Trail crews, is due for a facelift. We will be staying in the bunkhouse at the worksite.

July 11-15 – BSP Trail Team Project #3: Alpine Trail Reconstruction – Saddle Trail (Contact BSP.)

July 17 – Loon Count: Be part of the Audubon Loon Count at an assigned location in the Park.

July 19-23 – BSP Trail Team Project #3: Alpine Trail Reconstruction – Saddle Trail (Contact BSP.)

July 25-20 – BSP Trail Team Project #3: Alpine Trail Reconstruction – Saddle Trail (Contact BSP.)

August 2-6 – BSP Trail Team Project #3: Alpine Trail Reconstruction – Saddle Trail (Contact BSP.)

August 14-15 – VIP (Volunteers in the Park): This is a project to be announced after coordination with the BSP staff. Generally this will be a job involving painting, mowing, or general maintenance.

August 14-28 – Volunteers for Peace (VFP) will again be working in the Park. There may be a need to help with transportation and possibly overnight housing.

September 1-8 – BSP Trail Team Project #4: Hunt Trail – Erosion Control (Labor Day Weekend) (Contact BSP.)

September 11-12 – VIP (Volunteers in the Park): This is a project to be announced after coordination with the BSP staff. Generally this will be a job involving painting, mowing, or general maintenance.

Starting October 16th – Campground Closings: We spend one, two, three or more days (your choice) closing the camps for the winter and preparing selected sites for winter camping. We put canoes into storage, close up cabins, put picnic tables up, etc. There are also projects that the campground rangers hold for this time of year because it is easier to do them without campers on site. These jobs can include painting, general maintenance, some carpentry, etc.

Also in October, there will be another **chainsaw certification course**. If you are interested, please let me know. FBSP will pay the fee for the course for people willing to volunteer in the FBSP chainsaw crew next season.



Sawyers Doug Rich and Sue Lussier work on the Sentinel Mountain trail, where blowdowns fell along the trail rather than across, with FBSP chainsaw crew members Charlie Jacobi & Rosemary Hastings.

– Photo © Rosemary Hastings

Our Readers Write...

Continued from p. 3

... made to TPL to enable the Katahdin Lake transaction to take place.

I hope Kimmie Beal's lecture at the Annual Meeting went well. She's married to one of my son's best friends. A warm spring means early fly hatches. Does it also mean they die early? Here's hoping.

— Jim Garland, Columbus, OH

Good meeting...

I thought the meeting went really well on Saturday. Under your superb leadership, some really great things are happening. A very exciting time for FBSP! Are you planning on being at the BSP litter pick up on May 8th? Perhaps that would be a good time to put our heads together to get our plans firmed up for *Women On High*.

— Holly Hamilton,

Katahdin Lake Wilderness Camps

Leave No Trace training...

I got your email address from Marcia Williamson. She said that there might be some scholarships available for the Leave No Trace training next month at Baxter State Park. I would be interested if there are any still available. I am both a Cub Scout and a Girl Scout leader and would like to use this training to benefit both groups. I love to bring the kids camping and showing them about life outside of the city.

— Rebecca Capitan, Poland, ME

Going green in Millinocket...

Today we are installing a new "green" photocopier, printer, fax, scanner!! Perhaps in addition to using fewer chemicals it actually is a bit green in



Kristen Lindquist gives tribute to mountains in her poetry at FBSP Annual Meeting in April. — Photo © Bill Bentley

that we are unplugging 4 machines to plug in one that should be more energy efficient than any one of the 4 we are unplugging! It also prints with wax instead of toner! Who says it's not easy being green! Look forward to seeing you on your next visit!

— Matt Polstein, New England
Outdoor Center, Millinocket, ME

Mountain poetry...

I have a little chapbook that the Coastal Mountain Land Trust produced, called "Bald and Ragged Mountains: the Poetry of Place." It's \$8.00 plus .40 tax available here at the office, or for \$10 total I can mail it to you. At the FBSP Annual Meeting, I read "Ragged Mountain: The Way In" and "Bald Mountain: Glacier Rune" from that. Then I read "Grandmother" from "Invocation to the Birds" and "Bald Mountain: Sacred Space" from the chapbook. I'll attach them here. Thank you! I'm honored that you want to share them. Cheers!

— Kristen Lindquist, Camden, ME

Martin Pond visit...

The hike in to Martin Pond lean-to was uneventful although Jean Hoekwater saw me putting on my hiking boots at the Avalanche Field parking area for Katahdin Lake and stopped to say hello. Part of the hike in for me was to see whether or not I still had the energy to walk with a backpack anywhere. I passed the test with "flying colors". Martin Pond is a commodious lean-to that probably could sleep 10 people comfortably. From Martin Pond, we hiked to Katahdin Lake on the North Katahdin Lake Trail. We also took out the free use of the canoe at Martin Pond. This is a very small pond with views of Pamola and Chimney Peaks and part of the Knife Edge and of South Turner Mountain. ... I don't have the energy to climb The Mountain anymore anyway. But Baxter refreshes the soul and I am glad that the Park is in Maine and a gift to the people of Maine.

— Milt Wright, Readfield

RAGGED MOUNTAIN: THE WAY IN

The mountain exhales a mist filled with birdsong,
soft thrush fluting that rises from within leaves'

hushed rustle, endless watery warbles of invisible
winter wrens, a vireo's musical queries that he answers

himself. Beyond the interlaced stone walls of old pastures,
a sparrow flies just ahead, always ahead of you,

on the trail. Beech leaves flap on silvered branches,
prayer flags to mark the path through stones carelessly placed

by glaciers. As the trail begins to rise, resist the temptation
to rest on fairy beds of streamside moss fanned by ferns,

and don't drink the water. Gooseberries hide
at the base of ogre-sized talus spilling down the slope,

and Indian cucumber root, if you know how to find it
and don't mind getting your hands dirty. Blue gems

of clintonia berries shine amid sarsparilla. The path turns,
follows the ridge. Below you through the trees, scraps

of lake catch the light. Above, weather-stunted old
oaks hunch over you, your only protection against a wind

that has followed you up here. Take off your hat,
untie your hair, humble yourself to the wind's paws

which have softened even this mountain, even
these stones that feel like forever. You're there.

— Kristen Lindquist



Don Hudson wields a camera in northern Labrador. — 2008 Photo © Chris Ayres

Congratulations, Don Hudson ...

We congratulate FBSP Founding Member and past Treasurer Don Hudson on his many well-deserved recent honors: Maine Coast Heritage Trust's 2010 Espy Land Heritage Award; EPA Environmental Merit Lifetime Achievement Award; L. L. Bean Outdoor Hero 2010; Maine Environmental Education Association's Lifetime Achievement Award; University of Maine at Machais Keynote Address at Commencement and Distinguished Service Award. As he retires from 44 years on staff at Chewonki, including 19 years as President, we send him off in September on an Inuit-led cruise to the Arctic. We wish we were going along!

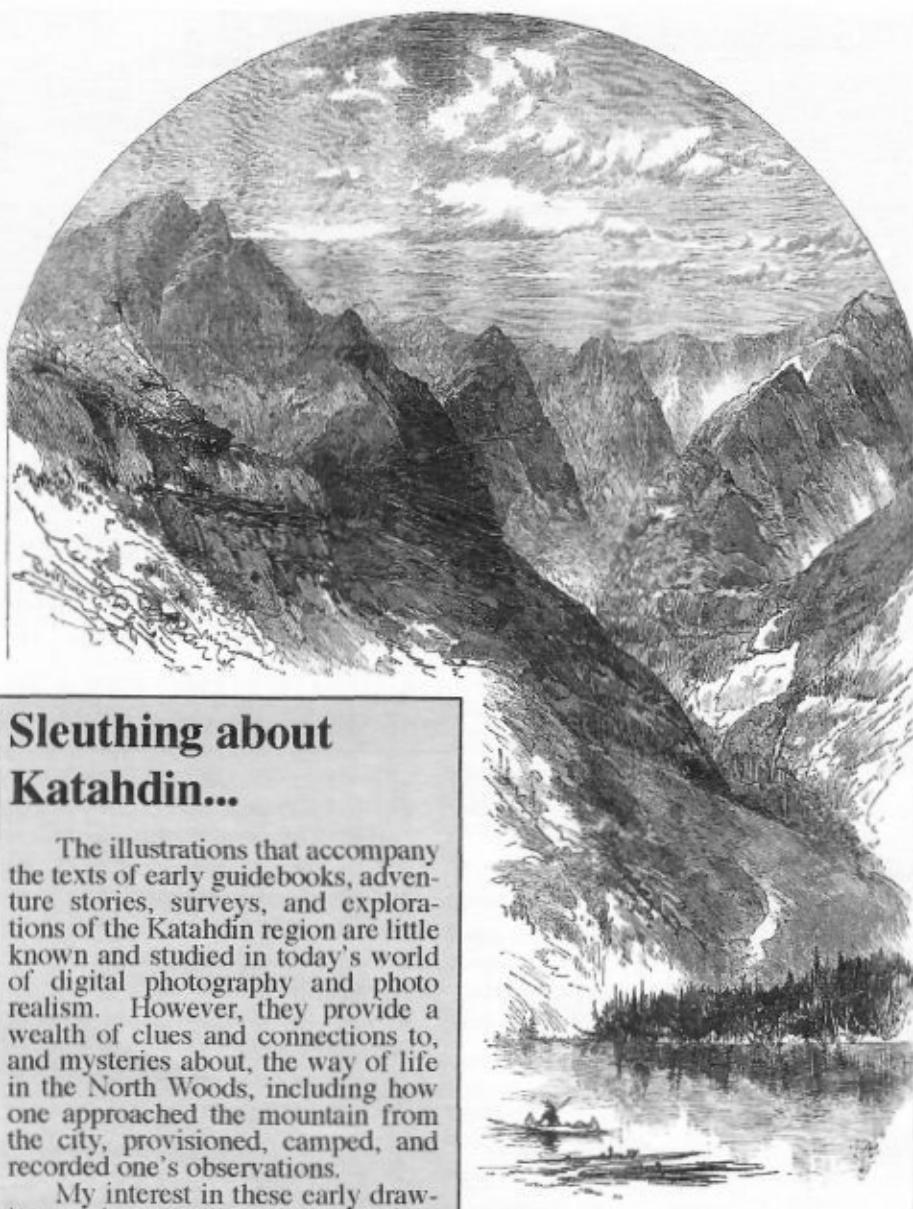
— Friends of Baxter State Park



Laurie and Mark Nale remove moss from cabin roof at Kidney Pond during VIP project.

— Photo © Laurie Rich

Printed by Lakeside Printing, Inc.,
Rockland, ME



A VIEW IN THE GREAT BASIN.—FROM A STUDY BY F. E. CHURCH.

Sleuthing about Katahdin...

The illustrations that accompany the texts of early guidebooks, adventure stories, surveys, and explorations of the Katahdin region are little known and studied in today's world of digital photography and photo realism. However, they provide a wealth of clues and connections to, and mysteries about, the way of life in the North Woods, including how one approached the mountain from the city, provisioned, camped, and recorded one's observations.

My interest in these early drawings and engravings was sparked by the discovery that professional engravers were hired by publishers and authors to make engravings based on plein air paintings, drawings, and photographs to illustrate a story. Often in the process of translation from one medium to another, the engravers enhanced their work with figures, articles of travel, etc., to make the story more visually appealing.

I hoped I might puzzle out a credible story line of this process step by step, for example, from oil sketches made by artist Frederic Church (of the infamous Katahdin Tea Party expedition) of Traveler Mountain and of the Great Basin painted on site in September of 1877 to the finished engravings with canoecists and dri-ki added by engraver Thomas Moran. *Scribner's Monthly* in NYC hired Moran to do illustrations for A. L. Holley's great artists' adventure story published the fol-

lowing May. This story, "Camps and Tramps about K'taadn," started my sleuthing into the art of Katahdin in the 19th and early 20th centuries....

— David Little, Art Detective

Editor's note:

David Little is a landscape painter living in Portland. He is currently working on a book about Katahdin and the artists who have been inspired by the mountain and the region. His column will appear regularly in upcoming editions of this newsletter.

Above right: A View in the Great Basin - From a Study by F. E. Church, an etching by Moran, appeared in the article "Camps and Tramps about Katahdin" written by A. L. Holley and published in *Scribner's Monthly*, May 1878.

— Photo courtesy of Maine State Library



Update from the Park

by BSP Park Director Jensen Bissell

The Baxter State Park Authority held its annual May meeting at Kidney Pond in unusually warm and early spring conditions. The Authority accepted with gratitude and appreciation a donation from the Friends of Baxter State Park in the amount of \$20,000. This donation will help the Park offset unanticipated expenses such as the March 2010 purchase

Above L - R: BSP Authority members Danny Martin and Janet Mills, retiring BSP Advisory Member Brian Noyes, retiring BSP Advisory Chair Steve Hutnak, BSP Authority Chair Alec Giffen, and BSP Director Jensen Bissell share the limelight at the Authority meeting at Kidney Pond in May.

- Photo © Laurie Rich

Below: BSP Resource Director Carol Redlesheimer gives FBSP a tour of the SFMA.

- Photo © Bill Bentley



of the long-time guide to Park trails, *Katahdin, A Guide to Baxter State Park*.

The Authority continued with a review of the presented FY2011 operating budget. The current economy and trends in outdoor use and wood products markets were reflected in the difficulties staff faced in constructing a budget that balances the Park's available revenue capabilities with the Park's mission to provide resource protection, opportunities for wilderness recreation, and facility maintenance. Administrative staff members have worked diligently to prioritize and reduce spending in responsible ways while maintaining staffing levels and necessary maintenance. We hope next year will be better, but we expect times to be tight for at least the near term.

The May meeting is the traditional meeting for departures and appointments to the various committees that assist the Authority and administrative staff in the development of operational and policy initiatives in the Park. The Authority thanked departing Baxter State Park Advisory members Steve Hutnak, Brian Noyes, and Carol Leckey for their service with a Katahdin benchmark plaque. The Authority then proceeded to appoint Dave Bucello of Bar Harbor, John McElwee of Bryants Pond, Doug Callnan of Houlton, and Sherry Dubis of Fort Kent as new members to the Advisory. Steve Hutnak departed from the Advisory as Chair so the Authority appointed current Vice-chair Carla Ritchie of Etna as Chair

and Rick Bray of Brunswick as Vice-Chair. The Authority also confirmed reappointments to the Scientific Forest Management Area Advisory Committee and thanked all committees, including the BSP Research Committee and the Investment Committee for their continued contributions.

Thanks to the expertise and hard work of Park Naturalist Jean Hoekwater and her Information and Education staff, the Park is now distributing a Park newspaper, *Wildnotes*. The newspaper is a very readable item full of helpful information on what the Park offers and how to appropriately recreate in a wild environment. The newspaper will be distributed to all Park visitors and be available at no cost at local outlets.

The Park is now in the final stages of a comprehensive revision to the Baxter Park Rules and Regulations. The new rules should be available for distribution sometime this summer. A draft of the revised rules is available on the Park's website baxterstateparkauthority.com

The Day Use Parking Reservation System (DUPR) for Katahdin trailheads is now in full operation in the Park and has been quickly put to use by Park visitors. Saturday, June 19th, marked the first day that the Roaring Brook parking lot was fully reserved under the DUPR system. Hikers with a DUPR can be assured of access to the reserved trailhead as long as they reach the Togue Pond Gatehouse by 7:30AM. Unclaimed DUPRs will be

Continued on p. 9

Continued from p. 8

released on a first-come, first-serve basis after 7:30AM. DUPRs can be made on-line through the Park's website or by calling 207-723-3877 during business hours.

BSP staff has been continuing work at the restructuring plan for the Foster Field Group Camping Area. This project began last fall and will eventually redesign the campsite to be entirely on to the east of the Park Tote Road. Foster Field is currently split by the Tote Road creating pedestrian hazards as well as dust and noise in the campsite. The site will continue to be utilized as a campsite, but the availability may be limited in the spring and fall through 2011.

Thanks primarily to the efforts of Russell Pond Campground Ranger Greg Hamer and BSP volunteers Scott Fischer and Chip Jahnke, we are much closer to opening two new 6-person lean-tos on the shore of Katahdin Lake. The new North and South Katahdin Lake lean-tos will complement the Martin Pond lean-to constructed in 2009 and provide back country campers a two or three day excursion that could include a canoe leg connecting the Katahdin Lake lean-tos. Toilet placement and construction work will complete this effort, and we hope to open the lean-tos to camping by August 1st. Check our website for information on opening.

The Memorial Day weekend was a busy one for many Park Rangers as we conducted the largest search effort in many, many years in our efforts to locate Michael Hays of Stow, Ohio. We began searching for Mr. Hays on Saturday, May 29 and on Monday, May 31, in accordance with Park protocol, the search command was handed to the Maine Warden Service. With the critical help of a Maine Forest Service helicopter and crew, Mr. Hays was spotted below Keep Ridge at mid-afternoon on May 31 and transported to Millinocket Regional Hospital for treatment of an injured knee and other minor injuries. The message the Park put forward regarding this event was simple: stay on marked trails and don't rely on cell phones for communication in the Park.

Following the Hays search, the Park held its annual all-staff spring meeting on June 8th. This large training effort included excellent presentations including a safety discussion from Peter Koch of Maine Employers Mutual Insurance

Need reservations?

Go to the Baxter State Park website at baxterstateparkauthority.com

Under Camping and Reservations, click on CAMPSITE AVAILABILITY to plan your trip. Then call or write Park HQ's.

Check on up-to-date trail conditions by calling the newly established Hiker Info Line at 207-723-4636.

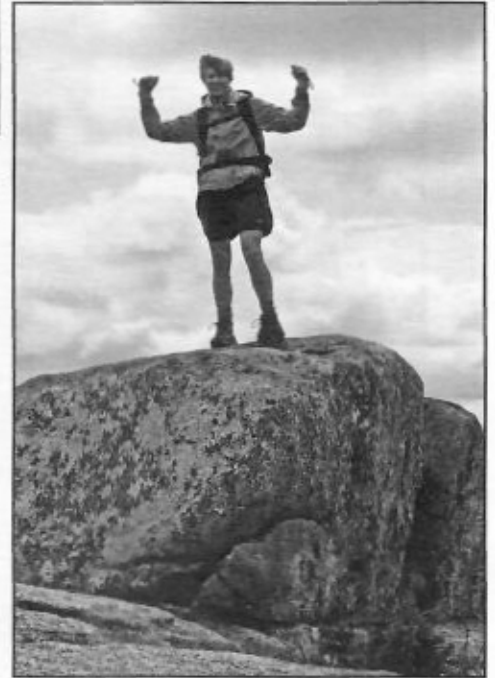
Day use parking reservations are now available on Park website or at Park HQ by calling 207-723-3877 (DUPR).

Company, a very interesting talk on bears and bear biology by Jennifer Vashon of Inland Fisheries and Wildlife, and a keynote talk on leadership by Attorney General and Authority member Janet Mills.

It might be a sign of an improving economy, but this year the Park experienced more turnover in the seasonal staff. Our new recruits are a very capable and dedicated group and will serve the Park well. An important transition was announced in mid-June as Park Resource Manager Carol Redelsheimer has submitted her resignation effective June 28. In her resignation letter Carol writes: "When I accepted the Resource Manager position in 2006, I believed I would remain for many years. Life does not always go as planned, however. As much as I have enjoyed working in the SFMA, at this time my personal situation is such that I need to be geographically closer to my family." We wish Carol the best of luck in her future endeavors and ap-

preciate her skills, abilities, dedication and commitment to the SFMA and Baxter State Park. We will be beginning the search process for a new BSP Resource Manager as soon as possible – again, check our website.

And I look forward to seeing you on the trail in the Park this summer!



FBSP Board member Sally Daggett is pretty pleased to be on the summit of Doubletop after spending a day as a campground volunteer. She led the way through wildflowers at lower elevations and deep snow higher up and enjoyed a close-up experience with a talkative moose, to boot!

- Photo © Charlie Jacobi



L to R: At Kidney Pond in June, Laurie Rich, Doug Rich, Roger Jensen, Diane Freelove, Maria Haas, Marshall Haas, Mark Nale, and Laurie Nale made up the work force during the first VIP day of the year.

- Photo © Park Visitor

Friends of Baxter State Park
P.O. Box 609
Union, ME 04862-0609

We're looking for new Friends!

_____ \$1,000	Governor Baxter Society
_____ \$ 500	Katahdin Club
_____ \$ 250	Knife Edger
_____ \$ 100	Hamlin Peaker
_____ \$ 50	Sponsor
_____ \$ 30	Family
_____ \$ 25	Individual

Please make checks payable to Friends of Baxter State Park. Dues and contributions are tax deductible to the extent provided by law. Send to

Friends of Baxter State Park,
P.O. Box 609, Union, ME 04862-0609
Friends Website: www.friendsofbaxter.org

Thank you!

Space Available on September Outing

Chimney Pond - Sept. 3, 4, 5 (3 nights) - 3 lean-tos

Pack your gear and provisions and join other Friends at CP for a chance to enjoy fall on the mountain. Summer or winter conditions could prevail. Exciting time to be in the Park. See *How to Contact Us* on p. 2 of newsletter to reserve a place for you, family, and friends.

Call for PHOTOS for 2012 BSP CALENDAR!

The BSP calendar includes photos of all locations in the Park during all twelve (12) months of the year and features only a few photos of Katahdin. Park staff and members of Friends of Baxter State Park donate all photos in the calendar. We welcome you to join FBSP and submit your photos for consideration. See FBSP website for instruction.

View from Tote Road at Abol Pond – Photo © Bill Bentley

