



# FOREVER WILD



Newsletter of Friends of Baxter State Park

Winter 2017

Vol. 16 No. 1

## Executive Director's Column

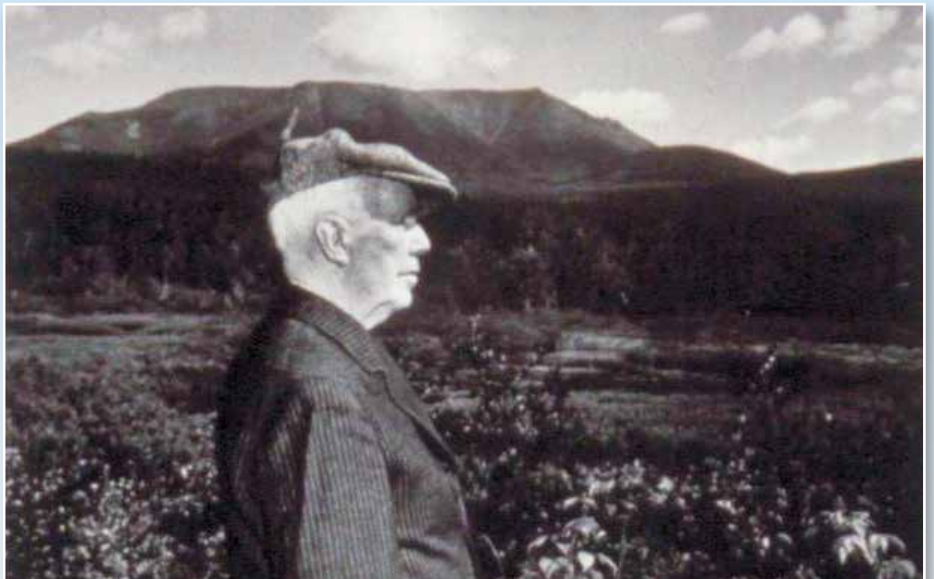
by Aaron Megquier

Many long-time Baxter visitors spend the winter planning trips for next summer, but for some Park users, peak season is just beginning. Cross-country skiing, snowshoeing, winter camping, ice climbing, and mountaineering are some of the favorite uses of Baxter State Park between December and April every year.

Winter camping reservations open on December 1 each year. The process for securing winter reservations has been streamlined from the one that many users remember from decades ago. All overnight winter use, and winter day-use climbs above treeline, require registration with BSP at least seven working days in advance of the trip. Special permission is not required for one-day trips below treeline – users must simply sign in at trailhead kiosks as they would during any visit. There is no longer a minimum group size for winter use, but solo winter users must complete a special registration form. Registration forms and more detailed information about winter use are available on the Baxter State Park website.

Although the BSP rules surrounding winter use have become easier to navigate, winter users still have some special hurdles to clear. Real winter gear is very different from summer, or even three-season, equipment. This is particularly true for clothing, footwear, and sleeping gear. Planning and preparation are always important in the wilderness, but even more so in the winter when the consequences for mistakes can be higher. For those who have never used Baxter State Park in the winter, day trips below treeline are a good place to start. A short camping trip with an experienced and well-prepared group can be a good next step. For day users, staying just outside the Park at a place like New England Outdoor Center (south

*Continued on pg. 2*



Percival Baxter, shown here in an iconic photo with Katahdin, laid out his vision for Baxter State Park in a series of Deeds of Trust and other communications. The Baxter State Park Authority is responsible for implementing Governor Baxter's vision through the ongoing management of Baxter State Park.

*—Photo courtesy of Baxter State Park*

## Governor Baxter's Vision is Alive and Well

*At a recent meeting of the Baxter State Park Authority on October 14, 2016, Attorney General Janet Mills read aloud a very powerful statement she had written about the mission and values of Baxter State Park. In this article, we reprint her words in their entirety. Friends is deeply thankful to have an Authority that takes its responsibilities so seriously, and carries out Governor Baxter's vision with grace and conviction. We should note that the following words are from Attorney General Mills, but the title of this article is our own.*

Whatever our personal views, our responsibility is to reflect and channel the wishes of Governor Percival Baxter who entrusted us with the care of this unique Park. Many are now celebrating the establishment of a National Monument to the east. Others – both day hikers and Appalachian Trail through-hikers – are celebrating their visits to the Park in a way that disturbs others' enjoyment of the Park. These challenges I hope we will face with a goal of harmony rather than conflict. But it is a good time to reflect on the mission and the values of Baxter State Park.

*Continued on pg. 3*



### BOARD OF DIRECTORS

Dick Klain, President  
 Jill Ippoliti, Vice President  
 Jym St. Pierre, Secretary  
 Gary Friedmann, Treasurer  
 Jim Andrews  
 Ellen Baum  
 Henry Beeuwkes  
 Jerry Bley  
 Alec Giffen  
 Bob Johnston  
 Jim Mroch  
 Josie Quintrell  
 Jaime Renaud  
 Karin Tilberg  
 Andy Walsh

### HONORARY DIRECTORS

Eric Baxter  
 Dean Bennett  
 Alexandra Conover Bennett  
 Buzz Caverly  
 David Getchell, Sr.  
 Jon Lund  
 Libby Mitchell  
 Chellie Pingree  
 Kay Rand  
 Neil Rolde  
 Rupert Baxter White

### HISTORIAN

Howard Whitcomb

### STAFF

Executive Director  
 Aaron Megquier  
 Administrative Manager  
 Sarah Holland  
 Newsletter Editor  
 Dick Klain

PO Box 322  
 Belfast, ME 04915  
[www.friendsofbaxter.org](http://www.friendsofbaxter.org)  
[info@friendsofbaxter.org](mailto:info@friendsofbaxter.org)

Friends of Baxter State Park is a 501(c)(3) organization working to preserve, support, and enhance the wilderness character of Baxter State Park in the spirit of its founder, Percival P. Baxter.

## Executive Director's Column

*Continued from pg. 1*

end) or Mount Chase Lodge (north end) may help to make the most out of short winter days.

The Park has made two changes this year which should help to facilitate winter use. The Park recently added a new eight-person bunkhouse at Nesowadnehunk Field, which replaces the somewhat optimistically-named Camp Cozy. This new bunkhouse is already in use and offers significantly improved facilities for users. In addition, the Park has initiated a rule change that will allow "fat bikes" to use the Abol Stream Trail during winter. This will make access to the Park's tote road much easier for winter cyclists. Please see page five for more information on these and other rule changes.

What are the rewards of visiting Baxter State Park in winter? Just ask a long-time winter user. The silence and solitude which Baxter offers in the summer become that much deeper in the winter. The Park becomes more remote, with the nearest road access sometimes over 20 miles away. Wildlife, from inquisitive golden-crowned kinglets to shy Canada lynx, are often the only companions on the trail or in camp. Some winter visitors have been returning to the Park with the same group of friends for 20 or 30 years.

For those who want to explore the wonders of the Katahdin region in winter with other Friends members, please check out our Warm Winter Weekend on the back cover of this newsletter.

## Membership Matters

by Sarah Holland, Administrative Manager

We are continually amazed by the activities of our members and all we have accomplished together. Here is a sampling so you can see how much your membership matters!



### Friends by the Numbers:

- 900 active members enjoy the benefits of being informed and participating in our activities
- 110 new members joined in 2016
- 34 international members are in our ranks
- 80 high school students have participated in the Maine Youth Wilderness Leadership Program since Friends launched it in 2009
- 16 expert instructors have taught workshops for the Maine Youth Wilderness Leadership Program since 2009
- 5,267 feet is the height of Baxter Peak, and \$5,267 is the annual membership contribution of our two Baxter Peak-level members
- 66 different photographers have contributed images to the BSP Calendar since 2009
- 18 books about Baxter State Park have been written by Friends members
- 61 issues of our *Forever Wild* newsletter have been published since 2002
- 4,119 acres around Katahdin Lake were added to Baxter State Park in December 2006, with Friends playing a significant role in the effort
- 4,200 hours of field research were carried out for the Plants of Baxter State Park project between 2012 – 2015
- 38 people participated in our Warm Winter Weekend last year



### In Memoriam

Phyllis Austin, Nov. 14, 1941 – Nov. 21, 2016

Sheilah Bissell, Jan. 10, 1954 – Nov. 25, 2016

## How to Contact Us:

Friends of Baxter State Park  
 PO Box 322  
 Belfast, ME 04915

**Aaron Megquier,**  
 Executive Director  
[director@friendsofbaxter.org](mailto:director@friendsofbaxter.org)  
 (207) 975-3787

**Sarah Holland,**  
 Administrative Manager  
[admin@friendsofbaxter.org](mailto:admin@friendsofbaxter.org)  
 (207) 505-5779

**Dick Klain,**  
 Newsletter Editor  
[info@friendsofbaxter.org](mailto:info@friendsofbaxter.org)  
 (207) 233-0272

## Governor Baxter's Vision... *Continued from pg.1*

I have been thinking about the early Native Americans and their reverence for Pamola and the mountain which they named "Ktaadn." I've been thinking too about Henry David Thoreau's visits to Katahdin and Governor Baxter's enormous love for this pristine area. What did they find here? Why did they love it? What did they command us to preserve about it?

I think it was here that they found peace. And it is peace they expected us to preserve – peace for ourselves, peace for the wildlife who make this their home. They expected people who come here to do so with that same reverence, with a longing for peace.

This is why we don't have fishing derbies, or 5k races, or marathon runs along the Tote Road, or big bonfires with high pitched songs, or fireworks on the Fourth of July. The Park is its own quiet celebration. Its meaning lies in its quietude, in its broad spaces, in its deep peace.

That is a tough concept for the culture of today, when people of all ages are bombarded with bits and gigabits of information every second of our lives; when music, news and the clutter of conversation confuse our minds, making us feel as dizzy as fireflies on a dark starry night. Some days peace is almost impossible to find.

This Park is an escape from all of that, a place of respite and repair. We love it in its human silence – only the wind to cheer you on or to challenge you at the summit, only the rush of water to comfort you in the stream, only the stare of a curious moose to give you all the conversation you need.

Here isolation is a virtue, almost a prerequisite at times. The founder and heroes of this Park envisioned contemplative walks, hikes and climbs by individuals, fishing alone on small lakes and big streams, not among clingy crowds of tourists and onlookers. The Park is uniquely non commercial.

The Mountain doesn't need a play date with you. It wants you to explore on your own, without appointment or celebration; the goal is not the summit but the getting there. You do not conquer it; it accepts you.

That is why we continue to say, the Park represents a different culture, a different psyche than the national park phenomenon, different from other places of cultural refuge. It is a place with a different mission, different values. It is not for everyone. We do not invite groups and crowds, posses of civilization through the open gate and along the rough marked trails.

The Park is a place in my mind where I can go on a deep winter's night, a picture in my soul, a thing I know will always be there, no matter how strange the storm, how wild the wind, how far the ride, how tough the seasons of a life.

It is our duty to honor it, to preserve it.

*Attorney General Janet Mills, BSPA member, October 14, 2016*

### Answer: Trivia Question in Fall Newsletter

In our fall newsletter, we posed this question: The inspiring story of Donn Fendler, who was lost on Katahdin for nine days in 1939, has been made into:

- A) a children's book;
- B) a graphic novel;
- C) a documentary film;
- D) a feature-length film, or
- E) all of the above.

The best answer was E, all of the above, although the feature-length film is still in production.

## Baxter State Park launches new Adopt-A-Trail Program

by Theresa Therriault and Alex Bradley, BSP Trail Specialists

The Baxter State Park Adopt-A-Trail Program is a great opportunity for both volunteers and the Park. There are many volunteers that would like to give back to the Park that has brought them many great memories. This program gives volunteers a sense of ownership of the maintenance of a selected trail. Trail Adopters have the opportunity to work more independently on an adopted trail of their choice during multiple visits throughout the season. The contributions that Trail Adopters bring to the Park allow for the necessary basic maintenance of trails to keep corridors open and blazed, and prevent further erosion. These types of contributions and support allow the Maine Conservation Corps trail teams the time to concentrate on other technical projects.

As this is the first year of the new Adopt-A-Trail program, there is a participation cap for 2017 at ten individual participants and/or groups (10 Adoptable Trails). This will ensure the Park's ability to manage this new program most efficiently. The deadline for application submission is April 30, 2017.

The process:

- Volunteers spend one day training with the Baxter State Park Trail Specialist(s) during June 3, 2017 National Trails Day training program.
- Chainsaw training will NOT be provided for 2017. However, participants with a current and recognized sawyer certification will be permitted to use a chainsaw in the Park.
- Volunteers select one trail, or one section of trail, to adopt from a list of available options.
- Commitments are made by each Adopter to schedule three (3) work trips to the adopted trail throughout the season. The dates and locations are then organized into a schedule by the Trail Specialist(s). This prevents accommodation conflicts and organizes communications to gate attendants and campground staff of the participation of such volunteers.
- Adopter agrees to a commitment to upkeep of their adopted trail for at least two years.
- The Trail Specialist(s) then communicates which volunteer camping facility will be reserved for the volunteer during their work visits.
- Area campground rangers help distribute tools, safety gear and paint to the Trail Adopters.
- Trail Adopters sign trail registers to account for their safe return to camp each night.

*Continued on pg.4*



Participants in the 2013 Maine Youth Wilderness Leadership Program helping with corridor definition on the Wassataquoik Lake Trail. –Photo © Will Greene

## President's Column

by Dick Klain

### Neighborly Cooperation

George Perkins Marsh in his book *Man and Nature* written in 1864 said: "All nature is linked together by invisible bonds and every organic creature, however low, however feeble, however dependent, is necessary to the well-being of some other among the myriad forms of life." By now I am sure that everyone is aware that we have a new neighbor. Baxter State Park's eastern border is now shared with a national monument administered by the National Park Service, a federal agency. Over the last couple of months the Superintendent of the Katahdin Woods and Waters National Monument has been meeting around the area to listen to the dreams and aspirations that people have for this small chunk of the northern Maine woods. Small, I know, is a relative term.

We've just returned from Oregon and took the opportunity to do some hiking in that state's largest state park. By contrast to Baxter State Park with over 200,000 acres, Silver Falls has only 9,000 acres. They profited from the CCC camps of the depression with beautiful stone buildings and western-style trails, meaning a lot of switchbacks. It is a unique place where there are ten waterfalls over thirty feet tall in an eight-mile loop trail. The highest is 135 feet. It was a great day hike. Oregon has a lot of federally-managed land in the state with national parks and wildlife refuges. One of the refuges made national headlines last year when it was taken over by armed anti-conservationists..

Fortunately for us here in Maine the headlines were more positive. The creation of the national monument, while verbally acrimonious, never rose to a level of violence. There was a lot of argument, but in the end President Obama made a decision and Baxter State Park has a new neighbor. The rancor has abated and people are beginning to work together to take advantage of this new opportunity. Tim Hudson, the Superintendent of the national monument, has been modeling this new cooperative effort through his listening sessions. Neighbors in northern Maine who have been on opposite sides of the issue are working together to seek the best solutions to deal with the expected influx of new visitors to the area. Jensen Bissell, Director of Baxter State Park, has reportedly taken a ride with Tim through the new monument to point out and discuss some of the concerns that he outlined in a letter. At one point Tim was not a little surprised to see a logging truck crossing the monument carrying timber that had been cut from a right-of-way owned by the State.

Early in November when all the visitors had left Baxter State Park, another friend of the Park worked tirelessly on a training mission that transported waste out of the park and needed supplies into backcountry areas far from the perimeter road. The quiet of the park was temporarily interrupted by the rotors of helicopters flying "missions" from the Millinocket staging area to several remote locations in the Park. Again this fall, the Maine Army National Guard was able to coordinate and cooperate with the Park and provide valuable training for its air crews and a unique service to the Park.

Previously in October, after our last of the season Friends "Walk in the Park" at South Branch Pond, my party stopped by the Shin Pond Village for a cup of coffee. The folks there reported a number of visitors already going into the national monument area. Business is up. They are hoping for a good snowmobile season this winter and perhaps some business from those who want to cross-country ski in the national monument. Not far away was a big "No" sign still displayed out front of the general store right next to a welcome sign. People are beginning to pull together. As George Marsh said so long ago, "all nature is linked." Because we are part of nature, we as humans are linked too. My hope is



A UH-60 Blackhawk helicopter and Maine Army National Guard soldiers working on Operation Timber Hook IV at Caribou Pit in Baxter State Park.

—Photo courtesy of Baxter State Park

that these links of cooperation continue to grow between Baxter State Park and all its surrounding neighbors.

### Adopt-A-Trail Program *Continued from pg.4*

- Trail Adopters submit their work reports to Gatehouse Attendants upon departure or mail them directly to the Trail Specialist(s). There will also be a digital copy of the work report available for submission.
- The Trail Specialist(s) keeps a file for each Trail Adopter and their adopted trail section(s) to document progress on trail sections and for detailed, updated trail condition reports.
- Volunteers each receive a copy of the BSP Trail Standards that are relevant to their expectations as a Trail Adopter. This will serve as their guideline to refer to when out on the trail, in addition to the training day.
- To deter excessive vehicle traffic and ensure that other Trail Adopters will have parking at park facilities, individuals may have up to a party of four to help on a section of trail, and should make plans to arrive in one vehicle. Outing clubs and other larger groups should carpool or optimize their transportation by traveling by van or other large capacity vehicles.

For more information, please email Trail Specialists Alex or Theresa at [trails@baxterstatepark.org](mailto:trails@baxterstatepark.org). To apply to Adopt-A-Trail, please visit: <https://goo.gl/forms/PVk0vLaluFCC4JhF2>

### Save the Date!

FBSP Annual Meeting

Saturday, April 1st

Coffee and muffins at 8:30am, Meeting begins at 9:00am

Viles Arboretum, Augusta, ME





In contrast to last year, winter has arrived early to the Park. As the winter campers, skiers and climbers arrive, we can turn our attention to planning and administration for the coming 2017 summer season.



North Branch Camps will be available for rental during the 2017 camping season.

– Photo courtesy of Baxter State Park

Thanks to the good planning and hard work of our maintenance crew, our new bunkhouse at Nesowadnehunk Field is now open and in use by winter campers. This eight person bunkhouse will provide warm and comfortable lodging for both winter and summer parties in this quiet and beautiful area of the Park.

In addition to the new bunkhouse at Nesowadnehunk Field, we are planning to open another, somewhat unique camping opportunity in the north end of the Park. The North Branch Camps are located about 1 mile east of the Burnt Mountain Picnic Area and trailhead. The camps were originally a housing location for the Department of Transportation crew that maintained roads in the northern end of the Park in the 1980s and early 1990s. The Park inherited these camps and refurbished them for Park administrative use, but the use has been sporadic and infrequent. After some consideration, we have decided to move these camps into the Park's rental offerings. The camps consist of two cabins. One is set up as a sleeping facility with gas lights, a wood stove and bunks

for eight. The second cabin is set as a gathering and eating facility with gas lights, a wood stove, a picnic table, a countertop and cupboard space. The facility includes a dedicated vault toilet, a fire ring and ample tenting space.

We have set the site capacity at 30 and will assign an enticing initial rental fee of \$75/night. This site would provide an attractive opportunity for scout, school and other organized groups who are self-contained and willing to travel to reach major trailheads in exchange for a private setting.

At their December meeting, the Baxter State Park Authority approved several rule changes. The proposed modifications, which will now move into the formal process for rule revisions, work to enact several needed changes which will:

- Prohibit the possession of unmanned aerial vehicles (drones) on trails and waterways in the Park.
- Formalize the extension of the Park's camping season at some campgrounds in the Park.
- Allow winter bicycle use of the Abol Stream Trail (to allow "fat-bike" cyclists to gain access to the Park Tote Road).
- Require a permit for AT hikers hiking the Hunt Trail in Baxter State Park.

The completion of the formal process for rule revisions can take 3-6 months. We hope to have a revised rules and regulations brochure ready to hand out to summer visitors by the time the Park opens to camping in May.

We continue to work on formulating policy to address the issue of continuing in-



A recent rule change will allow "fat bike" cyclists to ride on the Abol Stream Trail during the winter season, which provides access to the Tote Road.

– Photo courtesy of Baxter State Park

creased use of the Park by Appalachian Trail hikers. This unique segment of Park use continues to increase substantially each year. Since 1994, use of the AT within Baxter State Park has increased an average of 8.6% each year, including a 23% increase in AT hiker use in 2016 over 2015. For the last 30 years, the Park has worked to limit daily hiking access to Katahdin trailheads in order to protect the fragile habitats and communities on Katahdin and to preserve a wild experience for hikers. AT hikers are currently exempt from these procedures. The issues involving this use are complex and Park management is working closely with Appalachian Trail Conservancy staff to formulate workable solutions going forward.



The new bunkhouse at Nesowadnehunk Field opened for use on December 17, 2016, and features a wood stove, gas lights, and sleeping accommodations for eight people.

– Photo courtesy of Baxter State Park

## Remembering Donn Fendler

By Howard Whitcomb, John Neff, and David Little

Originally published in *East Branch Lands: A Journey Through Time*

On July 25, 1939, twelve-year old Donn Fendler was found alive along the East Branch of the Penobscot River opposite the Lunksoos Camps, thus ending search and rescue efforts that had captivated Maine and the nation for the preceding week. Donn's Boy Scout training served him well as he had the good sense to follow water downstream. Lost initially on Katahdin's vast Tableland, Donn descended into the remote Klondike, lying between Katahdin and the Brothers, where he encountered one of the headwater branches of the Wassataquoik Stream. For the next week he followed the stream's circuitous route until he eventually reached the East Branch of the Penobscot upriver from Hunt Farm. Nelson McMoarn, the proprietor of Lunksoos Camps, heard Donn's call for help and rescued him by canoe.

Quite remarkably, Donn had no major injuries, although he suffered from severe malnutrition and weight loss. His epic survival story narrated in *Lost on a Mountain in Maine* (now an all-time children's classic) demonstrated Fendler's extraordinary self-reliance and faith in the face of adversity.

Press coverage of the Fendler search and eventual rescue galvanized the country's attention to this remote area in Maine. Among his post-rescue accolades was the presentation by President Franklin D. Roosevelt of the Army and Navy Legion of Valor's annual medal for the youth hero of 1939. Donn went on to a distinguished military career, including service as a Green Beret in Vietnam. He retired from the U.S. Army in 1978 at the rank of Lt. Colonel.

*Editor's Note: Donn was an honorary director of Friends of Baxter State Park, and regularly participated in our annual meetings. He was a friendly, humble, and articulate ambassador for Baxter State Park for more than seven decades.*



Participants in the October 2016 Walk in the Park relaxing on the slopes of North Traveler, with Lower South Branch Pond in the background.

—Photo courtesy of Dick Klain

## Trip Report: Walk in the Park at South Branch Pond, October 14 - 15, 2016

By Dick Klain

Color the weekend Gold. We had three last minute no-shows but the seven of us who attended had a great time. Encouraging others to join us, a lean-to was also added to the bunkhouse number for a planned ten person party. Four of us arrived early enough on Friday to hike up to Howe Brook Falls marveling at the colors on the trail and the lack of water in the brook. That night after a scrumptious meal we all bedded down in the bunkhouse with one person who wanted the view using the lean-to. It was a windy, chilly night with temps reported at 24. Fall camping always has its surprises. After a quick breakfast we hit the trail to do the North Traveler. As a group of slow hikers with very limited daylight we did not attempt the Traveler Loop Trail. The views on this beautiful hiking day were amazing. Because it was so late in the season we missed the reds of the maples but the golds and yellows of the sugar maples, birches, beeches, and oaks were dazzling. We all returned before sunset, tired but oh so pleased with our accomplishment. Another night of good eating and local historical discussion followed. After a much warmer night, on Sunday morning we did a short trip up the Ledges Trail enjoying those very different views. Ours was a very talkative group. I lagged behind to let them get out of earshot. Soon it was only me and the whoosh of the wind in the trees. South Branch Pond is such a magical place. A special thanks to Ranger Gabe Williamson and Marcia during this last weekend that the campground was open.



Participants in the October 2016 Walk in the Park at South Branch Pond.

—Photo courtesy of Dick Klain

### Winter Snowshoe Hike

Join us for a winter snowshoe hike in the Kennebec Highlands! We'll be exploring the 3-mile Sanders Hill loop on Saturday, March 11 from 10:00am - 2:00 pm. Meet at the Sanders Hill Trailhead on the west side of Watson Pond Road, 1.3 miles south of Route 27. Host: Andy Walsh.



## Looking back...

by John Neff, Author of *Katahdin: An Historic Journey*

### Thank You, Phyllis



Phyllis Austin in her element.

Photo courtesy of Bunny McBride

Just a few weeks before Phyllis Austin's death on November 21, I read her intimate, close-to-the-heart one page contribution in the Appalachian Mountain Club's *Outdoors* magazine. I was deeply moved by her profound personal reflection on the challenges she had faced in her life, moving her eventually from an active outdoor hiking, paddling, and climbing life to an almost totally inactive life. It was obvious she had accepted that difficult transition with grace and inner strength, giving thanks for the gifts given to her, even as she struggled physically.

I was especially touched by her words because, only a few years ago, this aging, greyheaded hiker had several experiences, one in the shadow of my beloved Katahdin, that forced a new reality upon me. No more long challenging hikes to grand places and no more tough overnight backpacking adventures. I needed to accept a new wonder-filled reality with what grace I could muster. Carefully planned, less strenuous hikes and outdoor experiences can still make the heart sing. Simpler walks and hikes have their own power to touch the spirit. More modest challenges provide that sense of awe and wonder that makes life full and abundant.

Thank you, Phyllis, for reminding me that physical limitations do not diminish the joys of engaging the natural wonders that surround us each day. For those of you who face the inevitable challenges of aging, take heart. There is still so much "out there" just waiting to make YOUR heart sing and YOUR spirit soar. See you on the trails.

### Phyllis Austin 1941 - 2016

From 1969 until 2006, Phyllis Austin wrote scores of news stories about a wide array of Maine environmental issues. She provided the longest continuous coverage of Baxter State Park of any journalist. In addition to her articles, Phyllis authored two book-length biographies, one about Buzz Caverly's years at Baxter State Park (*Wilderness Partners*, 2008), and more recently about conservation philanthropist Roxanne Quimby (*Queen Bee*, 2015). She also co-edited the book *On Wilderness: Voices from Maine* (2003). Phyllis not only wrote about environmental issues, she also influenced them. For instance, she organized volunteers to help research land use issues, recreation practices, and remote trout ponds. Her investigative reporting helped lead to the passage of laws and regulations to strengthen our legal environmental protections. She was among the first people to call the original meeting that led to the creation of Friends of Baxter State Park.

## 2017 Walks in the Park

Please join us for one of our many trips this spring and summer:

March 11: Kennebec Highlands snowshoe hike  
Date TBD in June: Speckled Mountain day hike  
July 19 – 21: Martin Ponds & Katahdin Lake backpacking trip  
Date TBD in August: Day hike of Katahdin via Abol Trail  
Dates TBD in September: Kidney Pond weekend  
Date TBD in September: Day hike of North Brother  
September 1 – 3: South Branch Pond weekend  
September 2: Day hike in South Branch Pond area

More details and updates at [www.friendsofbaxter.org](http://www.friendsofbaxter.org)

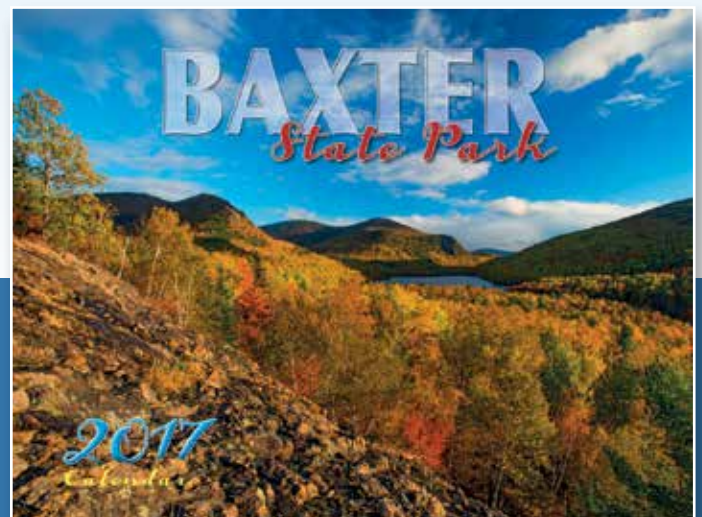
## Baxter State Park Trivia

– Puzzle Master Al Howlett

The recently published *Plants of Baxter State Park* field guide provides full descriptions and photographs of all 857 species of plants known to occur in Baxter State Park. How many of those 857 plants are considered to be invasive in Maine?

- A.) None
- B.) 2 species
- C.) 7 species
- D.) 30 species

Send Trivia answers to [admin@friendsofbaxter.org](mailto:admin@friendsofbaxter.org)



### 2017 Baxter State Park Calendars For Sale

Friends has 2017 Baxter State Park calendars for sale. As of January 1, calendars are on sale for \$10, with sales tax and shipping included. All proceeds benefit Friends of Baxter State Park. The photos alone are worth the price! You can order online at [www.friendsofbaxter.org](http://www.friendsofbaxter.org), mail a check to PO Box 322, Belfast, ME 04915, or call (207) 505-5779.



**Friends of Baxter State Park**

**PO Box 322**

**Belfast, ME 04915**

Visit us at [www.friendsofbaxter.org](http://www.friendsofbaxter.org)

Email us at [info@friendsofbaxter.org](mailto:info@friendsofbaxter.org)



**Find us on  
Facebook**

ADDRESS SERVICE REQUESTED

We're looking for new Friends!

- \_\_\_\_\_ \$10 Student
- \_\_\_\_\_ \$25 Individual
- \_\_\_\_\_ \$35 Family
- \_\_\_\_\_ \$60 Sponsor
- \_\_\_\_\_ \$100 Hamlin Peak
- \_\_\_\_\_ \$250 Knife Edge
- \_\_\_\_\_ \$500 Traveler

Join our Governor Baxter Society:

- \_\_\_\_\_ \$1,000 Pamola Peak
- \_\_\_\_\_ \$2,500 South Peak
- \_\_\_\_\_ \$5,267 Baxter Peak
- \_\_\_\_\_ \$10,000 Katahdin

Please make checks payable to Friends of Baxter State Park, or join online.

Dues and contributions are tax deductible to the extent provided by law.

Send to:

**Friends of Baxter State Park**  
**PO Box 322**  
**Belfast, ME 04915**

*Thank you!*

## Join us at Warm Winter Weekend

We invite you to join other Friends of Baxter State Park members for a weekend of fun at New England Outdoor Center this winter. On the weekend of March 16 – 19, 2017, we've rented three cabins with a total capacity for 38 people.

New England Outdoor Center's Twin Pine Camps are located on the shore of Millinocket Lake, about eight miles south of the Togue Pond gate of Baxter State Park. The accommodations include beautiful heated cabins with full kitchens, groomed cross-country ski trails, an inviting lodge and restaurant, and wonderful views of Katahdin. The cost for the weekend is \$191.25 per person, regardless of whether you spend one, two, or three nights. Participants will handle their own breakfasts and lunches, and contribute to shared meals on Thursday and Friday nights. This trip is open to all members of Friends of Baxter State Park.

To reserve a space, please call NEOC at 1-800-634-7238 and mention you are with the Friends of Baxter State Park group. This trip usually fills very quickly – call to make your reservations today!