



Friends of Baxter State Park

Forever Wild

NEWSLETTER OF THE FRIENDS OF BAXTER STATE PARK
FALL 2010 VOL. 9 NO. 4

President's Column

by Barbara Bentley

At Katahdin Lake this summer, an out-of-state camper expressed surprise at how small an organization Friends of Baxter State Park is. "Only 500 members?!" she said. I guess it depends on your point of view, but we're quite proud to have over 550 very supportive and enthusiastic members! To be sure, we'd welcome more. Let me tell you a couple of reasons why.

First, your membership contributions – whether you join at the \$1000 Baxter Society level or at a more modest level – are all very important to us and collectively represent extraordinarily generous support. We need plain old cash in order to fund our many projects and to participate in matching grant programs like the one that funded 9 weeks of Maine Conservation Corps trail crews in the Park this summer. Friends paid \$35,000 up front, and the Park contributed in-kind supervision, materials, and lodging. The grant reimbursed us 80% of the cost of the project. Trail restoration work was accomplished on the Abol, Helon Taylor, Marston, Chimney and Saddle trails. In cases like this, Friends needs to pay for the work up front. Your membership dollars at work!

Second, our membership numbers are equally important. It takes many hands to do the work of this volunteer organization. We rely on the energy and expertise of our members to educate others about the value of wilderness preservation, to supply valuable volunteer support for the Park both in the Park and in the larger community, and to make us eligible to apply for grants that support the Park.

Continued on p. 2



Above: Pleased to find themselves on Baxter Peak, participants in the Maine Youth Wilderness Leadership Program were able to look north and see where they had started their journey on North Traveler at South Branch Pond a week earlier. *L to R back row:* Connor Pillsbury, John Fox, Kris Bears, Alex Chassé, Maya DeGroot; *middle row:* Olivia Hoch, Kelly Edwards; *front row:* Julie Churchill, Casey Thornton, Austin Kessler. Below: Heading up above treeline, hikers experience first hand the geology of the Park, one step at a time.

– Photos courtesy of MYWLP 2010 @ <http://www.photoshop.com/users/mywlp10/>

Wilderness Setting Ideal for Learning Maine Youth Wilderness Leadership Program 2010

On Sunday, August 15th, parents, members of Friends, and the press waited eagerly, some anxiously, at Park Headquarters to welcome home the ten Maine high school students and their two leaders from eight nights of backpacking in the Park with the Maine Youth Wilderness Leadership Program (MYWLP). When the van arrived, they burst forth enthusiastically, greeting us all, but were definitely in no great hurry to head home. Donning their bright yellow MYWLP t-shirts, they each shared with us the high points of the trip, answered questions about the experience, received awards including the traditional *Footprint Award* made by Sherwood Hilt, played one last favorite game of Ninja, took more photos, and vowed to keep in touch.

Try to imagine nine days in the



Continued on p. 3



BOARD OF DIRECTORS

- Barbara Bentley, President
- Howard Whitcomb, Vice President
- Denise Clavette, Secretary
- Al Howlett, Treasurer
- Henry Beeuwkes
- Donna Betts
- Lindsay Bourgoine
- Anne Huntington
- Sally Daggett
- Charlie Jacobi
- Ralph Pope
- Jym St. Pierre
- Mike Stillman
- Milt Wright
- Chaitanya York

HONORARY DIRECTORS

- Eric Baxter
- Dean Bennett
- Buzz Caverly
- Alexandra Conover
- Donn Fendler
- David Getchell, Sr.
- Leon Gorman
- Jon Lund
- Libby Mitchell
- Chellie Pingree
- Kay Rand
- Neil Rolde
- Rupert Baxter White

Newsletter Editor
Barbara Bentley

Administrative Manager
Rosemary Hastings

Volunteer Coordinator
Laurie Rich

PO Box 609
Union, ME 04862-0609
www.friendsofbaxter.org

Friends of Baxter State Park is an independent citizen group working to preserve, support, and enhance the wilderness character of Baxter State Park, in the spirit of its founder, Governor Percival Baxter.

President's Column *Continued from p. 1*

Plain old numbers of members matter. Very familiar with the Park and interested in its future, our members are well-qualified to provide valuable input into the Park's drafting of a new management plan, and individuals will shortly be able to send comments on the plan in progress by going to the Park's website www.baxterstateparkauthority.com

At the BSP Authority meeting on October 1st at Park Headquarters, BSP Director Jensen Bissell presented "A Proposal to Improve Backcountry Camping Opportunities in Baxter State Park." Of particular interest to some of us is provision #3: Restore and Reopen the North Peaks Trail. The Park's goal is to provide continuous looping travel to multiple Park locations and trails from a single trailhead. For over 50 years, the Northwest Basin - North Peaks trail has been a favorite loop for our family and friends when camping at Russell Pond. We are delighted at the prospect of being able to hike with our grandchildren on that loop.

We all understand the value of land conservation through Percival Baxter's gift of the Park to the people of the State of Maine. We also recognize the contribution of programs such as Land for Maine's Future (LMF) that, in its 23 years of existence, has protected more than 500,000 acres of wildlife habitat, farmland, and unique natural places throughout the state. President Obama recently launched the America's Great Outdoors Initiative (AGO) to promote and support innovative community-level efforts to conserve outdoor spaces and reconnect Americans to the outdoors. As part of AGO, local organizations like Friends of Baxter State Park have been asked to share smart, creative ideas and programs already in place to achieve these goals. The Maine Youth Wilderness Leadership Program is a prime example. (See article on p. 1.) You can learn more about AGO and send comments at www.doi.gov/americasgreatoutdoors/

FBSP annual membership renewal date is March 1st. We invite those of you who have not yet renewed your membership to do so now. We value your support. And to those who have provided additional financial support this year, we say a special thank you. I think you'll find we've put your dollars to good use! Our Membership Chair, Chaitanya York, is fond of saying "Keep it personal" when talking about recruiting new members. I urge you to follow his advice. Invite a friend, or someone you know who visits the Park, to join Friends. Currently, the FBSP website is being overhauled and will soon be up and running. And we'd be glad to send our handsome new brochure to prospective members. Thanks for your help in spreading the word!



2011 Baxter State Park Calendars available now - \$12 each

Buy your calendar now and see the Park, all twelve months of the year!

Thirteen photographers donated thirty-five photos, and the Park staff contributed educational captions for each. This makes a great souvenir for those who know the Park and a wonderful introduction for those who haven't been so fortunate. See *How to Contact Us* to place your order.

How to Contact Us:

Rosemary Hastings, Admin. Manager
3 E. Terrace, Millinocket, ME 04462
rosehast@gmail.com

Barbara Bentley, President
546 Hatchet Mt. Rd, Hope, ME 04847
207-763-3014 or 207-542-5207
barbarabentley@tidewater.net

Laurie Rich, Volunteer Coordinator
207-862-6580 or 207-249-5023
friendsofbaxtervolunteer@gmail.com

Membership Matters

Membership renewal notices were sent out on March 1, 2010. THANK YOU to all who have renewed so far. Reminder notices will be sent out shortly, and we hope to hear from the rest of you soon! Please consider moving up a category if you can. Your support will go a long way to helping Friends accomplish the many projects we have on the drawing board.

Current Membership categories include:

Governor Baxter Society	\$1000
Katahdin Club	\$500
Knife Edger	\$250
Hamlin Peaker	\$100
Sponsor	\$50
Family	\$30
Individual	\$25

Just over half of our members live in Maine, the others coming from all over the United States and Eastern Canada.

Thank you for being a Friend!

Wilderness Setting

Continued from p. 1

wilderness with eleven people you've never met. One participant said, "It was the most meaningful experience I've had, and other people should experience it, too." Another said, "It showed me who I am and who I want to be." What had gone on during the trip to elicit such comments?!

After an introduction to the Park by BSP Director Jensen Bissell and a presentation on the Park's flora and fauna by BSP Naturalist Jean Hoekwater at Park Headquarters on day one, parents headed for home, and the group began to work together. Photographer Bill Bentley worked with them on recording their experience photographically, BSP Rangers Gabe and Marcia Williamson introduced the art of *Leave No Trace* camping, and journalist Brad Viles had them writing in journals on the summit of North Traveler. About the evening spent with retired Ranger Chris Drew, one participant said, "It was interesting to know the lasting effect of the Park on one person." Another commented, "The stories helped me learn from the experience of others." After two nights at South Branch Pond, the group hiked to Russell Pond for three nights where they worked with Park Rangers Greg Hamer and Brendan Curran, explored the Wassataquoik region, and spent a day with Penobscot Cultural Educator Barry Dana and his family. Moving on to Roaring Brook for the last three nights, they hiked Katahdin with geologist Bob Johnston, painted at Katahdin Lake with artist Marsha Donahue, and enjoyed the hospitality of Katahdin Lake Wilderness Camps with Holly Hamilton.

The success of the program is due in no small part to the wilderness leadership of Keith Crowley and Leah Titcomb of the Chewonki Foundation. "Wilderness is a great setting for learning," said co-leader Keith Crowley. "Everyone is on the same playing field and open to new experiences. Having to learn a new way to go to the bathroom makes learning geology seem easier." He added that an important connection to the land is established during the long stay in the Park. Keith explained that this group of strangers of the same age, passion, and level of enthusiasm, hailing from Ft. Kent to Portland, learned a lot about the State of Maine and Mainers. From Penobscot Barry Dana, they learned about another culture. They also learned about the Park and the challenges involved in preserving the Park. And they learned

about various careers, among them that of naturalist, geologist, ranger, journalist, and artist. One participant said, "I'd like to be able to lead a trip like this one day."

The Quimby Family Foundation has generously funded this program for three years, and ten more lucky Maine student leaders will have this opportunity in 2011. Please spread the word. Applications will be available on the FBSP website in February 2011.

Our Readers Write...

80th Birthday Climb...

In my experience, anyone who has climbed Katahdin has come away with a lasting lifetime memory. I suppose this is true for many mountains, but somehow this mountain's impact can be profound all out of proportion to its size. This rugged breathtaking massif of punishing granite has bewitched generations of adventure-seekers and become a Mecca of sorts for those who would experience Maine at its most primal and rare.

And every pilgrimage has its story. In my own family, that story has centered on my father John Neff; to you readers, a long-time veteran of Baxter goings-on and author of *Katahdin: An Historic Journey*, but to me merely family patriarch and childhood hiking companion. Recently, my sister Lesley and I (along with a quintet of family

and friends) accompanied my father on a trek to the summit on the occasion of his 80th birthday. Aging had taken its toll on all of us (on dad less than his progeny, I assure you) since we last climbed many years ago. But what we lacked in youthful steam, we made up for in philosophy. Far removed from the sloppy arrogance of childhood, we experienced the mountain in a more elemental way. And do not try to tell me that the mountain did not know this. It tossed poignancy at us without reserve: a wayward moose (undoubtedly channelling the god Pamola), here staring us down at the privy, there languidly interrupting my father's sunset lecture at Chimney Pond; an unusually dense swirling bank of clouds blasting its way across the tablelands and curling off the summit; more laughter at meal times than our sore limbs warranted. It seemed to sense that this trip, among the many others we had made together (and apart) held something a little more lasting, something we could hold onto for a longer while.

— Eric Neff, Colledgeville, PA

Roads in the Park...

Your comment on roads in the President's Column of *Forever Wild*, summer 2010, is right on the mark. Baxter State Park is very, very fortunate to have Percival Baxter's "no more

Continued on p. 6



Family and friends honor John Neff's 80th birthday on Katahdin, very familiar territory for this longtime devotee of the Park. Standing L-R: Betsy Neff Hay, Rebekah Hay, John Neff, Eric Neff, Douglas Hay. Seated: Lesley Neff Lopez, Nanda Downes, Del Downes

— Photo @ Eric Neff

Looking back...

Avalanche Brook Headwaters

Early this summer there was a much publicized rescue on Katahdin of a hiker who wandered off the trail in the Knife Edge/Pamola Peak area. Because he wandered down toward Avalanche Brook to the south and east of the Keep Ridge it brought to mind the interesting role that area played in Katahdin's history. Marcus Keep, one of the first visitors to Katahdin from the east (Stacyville), utilized the great avalanche that flows down from the Keep Ridge into Avalanche Brook for his Keep Path in 1848, the first formally spotted trail to the mountain. At the foot of the slide there was a massive grove of birch which sheltered a beautiful campsite along Avalanche Brook for many years, from Keep's time until the grove was obliterated in the 1940s by logging in the region. Several now-abandoned trails passed by the St. John Trail, the Leavitt Trail, and, of course, the Keep Path.

The open field at the foot of the slide, now remote and no longer accessible, served at one time as a logging camp but is now the undisturbed home of deer, moose, and other wildlife. It is an awesome and inspiring place. Even the old logging road along Avalanche Brook has now mostly returned to its natural state. One is drawn to glance up to the great slide and then across to Pamola Peak and the Knife Edge all of which rise sharply from the edge of the field. Another example of a sacred site now "forever wild" as Gov. Baxter and all of us would wish it to be.

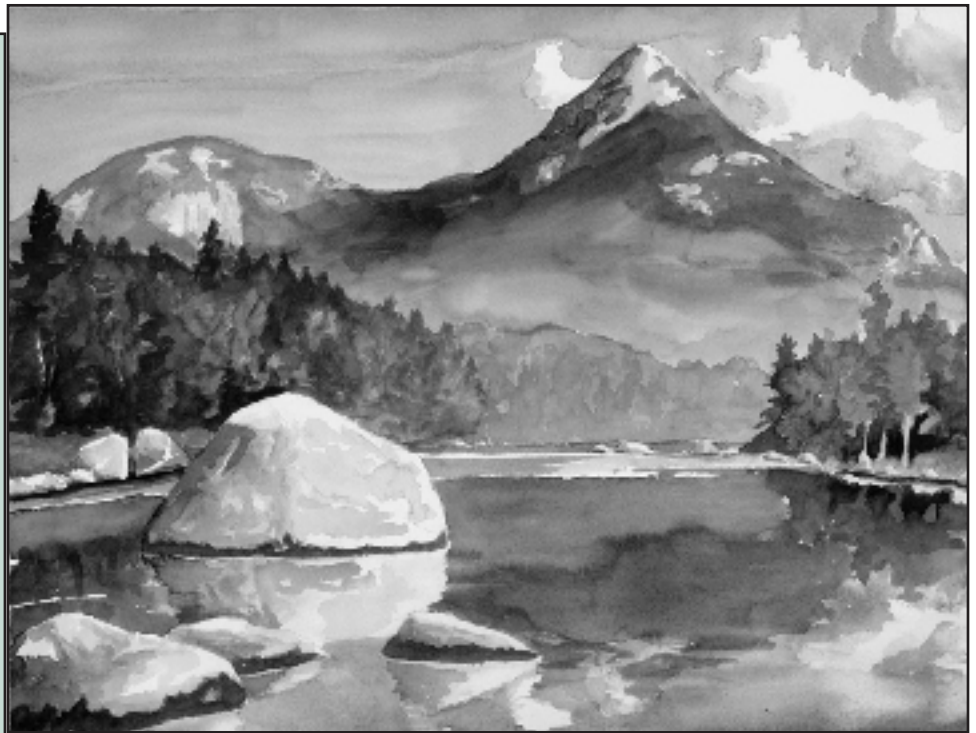
— John Neff,

Author of *Katahdin: An Historic Journey*

Below:

With the publication of *Bulletin 43, A Guide to the Geology of Baxter State Park and Katahdin* by Douglas Rankin and D.W. "Dee" Caldwell, FBSP was honored to be able to commemorate Dee for his work on, and devotion to, the Park. Gary Boone arranged for the presentation to the BSP Authority at their meeting October 1, 2010, of a framed photo of the North Basin, accompanied by an image of Dee and text about his relationship to this special place. Pictures at BSP HQ are (L to R) Janet Mills, Alec Giffen, Jensen Bissell, Danny Martin, and Barbara Bentley.

— Photo © Marcia Williamson



"Doubletop from Rocky Pond" is one of the paintings done by 2010 Visiting Artist Michael Boardman during his stay in the Park.
— Photo © Michael Boardman

BSP Visiting Artist 2010

Focus on Painting from Life in the Great Outdoors

This summer, I was blessed to be selected as this year's Visiting Artist in Baxter State Park. It was the perfect opportunity to break away from my graphic design and illustration and focus on painting from life in the great outdoors.

BSP Rangers Andy & Charity at Dacey Pond were welcoming, friendly, and essential in planning out my painting excursions. I also benefited from the good will of the previous Visiting Artist. Many of the campers already knew of the program and were very interested in what I was up to, which lead to some great free meals. (Thanks, Evelyn Dunphy!)

I had compiled a list of subjects to paint and was able to accomplish quite a number of those (rock and moss paintings, view of Doubletop from Rocky Pond, Chimney Pond Basin), but I was also open to the visual displays the Park brought to my attention. To just sit, paint and focus on one thing for several hours at a time was a true gift.

As well as landscapes, I also have a strong interest in wildlife art, so like all the other Park visitors I wanted to know were the moose were. (Hiding in the scrub in August, I found out). But I did get lucky a couple of times. Once I overheard someone tell the ranger of a cow moose at the marsh. I threw my gear in the car and drove down for a quick twilight sketch in my nature journal, just enough notation to work up a finished piece later.

Being able to share what I do with the Park visitors was one of the highlights of my stay, I had several people show me their sketches of places in the Park they enjoyed. I like to keep a nature journal while outdoors, a visual record of things that inspire me and a reference for studio paintings. You don't have to be an artist to do little sketches of what you see, and it makes a great keepsake after your trip.

The Visiting Artist program is a fantastic opportunity for artists and a great addition to the Park programs. I am now reliving my stay as I finish up my paintings from the trip, and look forward to coming to the Park for inspiration for many years to come.

— Michael Boardman

Editor's note: The artist can be reached at 800-791-2799 or www.coyotees.com

Pitchin' In and Steppin' Out

Laurie Rich,
BSP Volunteer Coordinator

207-862-6580 hm
207-249-5023 cell

friendsofbaxtervolunteers@gmail.com



A look at the Volunteers in the Park 2010 season

The 2010 season is coming to a close, and we can be proud of what volunteers have accomplished in the Park.

The VIP (Volunteers in the Park) program got its start during a brainstorming session at BSP Headquarters during the winter months. What started as a FBSP plan expanded to include all BSP volunteers. "Blast" emails were sent out throughout the season announcing each volunteer opportunity as it arose.

There were over 561 hours donated by volunteers for nine VIP events. This does not include all the trail work, loon count, road clearing, and many other individual projects.

As a group, we contributed to the opening of the campgrounds at Abol, Katahdin Stream, Daicey Pond, and Kidney Pond. There were four FBSP chainsaw crews clearing trails on Sentinel Mt., Doubletop, Wasataquoik Lake Trail, and cutting 3 cords of firewood. We went on to paint six buildings for three projects: North Branch Camps, snowmobile sheds and Nesowadnehunk ranger's office. We have also collected data at Sandy Stream Pond for a BSP Advisory Committee.

Many of you have helped with individual projects such as repairing leantos, cleaning camping sites, glazing windows, making stairs for a canoe landing, plant surveys and lots and lots of trail work. We introduced 14 new people to the volunteer experience. Thirteen of these are from the FBSP family.

We look forward to the return of veteran volunteers next year and welcome anyone who wants to give it a try. Certified sawyers are needed for the FBSP chainsaw crews early in the season, and each sawyer needs three helpers. Sometimes we go to the Park *before* bug season.

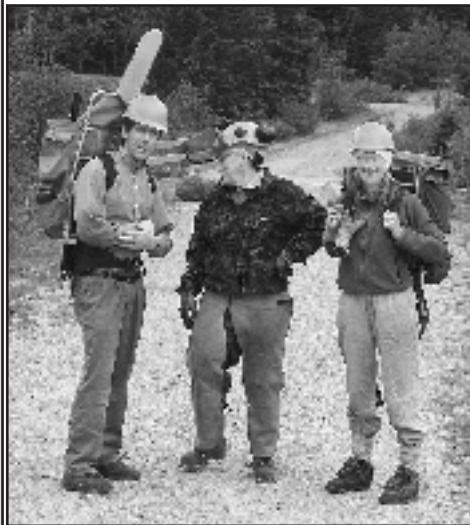
Thanks again for all your volunteer efforts. Many hands make



Above: An information panel at Norcross on Rt. 11 features information on Baxter State Park and a clear view of Katahdin over South Twin Lake. Photos featured include ones by FBSP members Bill Bentley and Laurie Rich.
– Photo © Bill Bentley

Right L to R: FBSP Chainsaw crew members Charlie Jacobi, Doug Rich, Rosemary Hastings, and Suzanne Lussier are suited up for work on the Sentinel Mt. trail.

– Photo © Laurie Rich

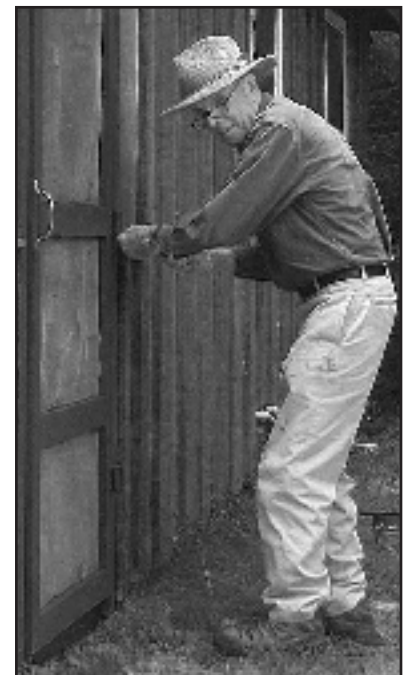


Above L to R: Jim Dunham, Bill Bentley, and Cindy Dunham set out for spring clearing of the trail up Doubletop from Nesournehunk Campground.

Below: Volunteers are not alone on the job.
– Photos © Laurie Rich



Below: Dave Getchell is back in the Park as a volunteer in the VIP program and reports what a good time it is!
– Photo © Laurie Rich



Our Readers Write...

Continued from p. 3

roads" policy in effect. Easier and more extensive access from new roads and/or "improved" existing roads facilitates increased user visits, which in turn quickly overwhelm the resource and result in "Wilderness Forever Gone." Enlarging trailhead parking areas also has the same effect. Keep roads and parking areas as they are and Baxter will remain a special place.

– *Bob Richardson, Walpole, NH*

Twice in four days...

What a wonderful surprise in the mail – Bill's photograph. Thank you so much. I was at the Park for a week the first of June. Climbed Katahdin twice in four days, which was a personal best for me. How quickly one can forget the old rungs on the Hunt Trail. I hear the trail crew may be reworking some of the rung rocks this summer, and I hope so. Either I'm getting shorter or the rungs are getting taller. I hear from Marsha Donahue that several of you are re-enacting a past climb in the fashion of the day. I'll look forward to hearing the stories that will come from that endeavor. Good Luck with the skirts and bloomers. I hope the weather is perfect.

– *Phyllis Austin, Brunswick, ME*

Rule changes...

The one thing I've heard about is the relaxation of the radio rule inside the park; don't recall the exact details but I hate camping in National Park campsites that have little restriction on the use of radios and other electronic devices, it's a damn shame that this revision to the rule would even be considered at BSP, I check my electronics at the door and the woods are my sounds that I want to hear....

– *Alan Watson, Woodstock, VA*

Thanks for photo...

We received the photograph today. Thanks. It's terrific! It's very well printed, too. Our son Jeff is jealous and wants to know what printer and paper Bill used. Jeff bought a fancy Canon printer a few months ago and has had a hard time making prints that he likes. Thanks, too, for the letter. Glad things are going well.

– *Jim Garland, Bexley, OH*

Editor's note: Governor Baxter Society, Katahdin Club, and Knife Edgers receive photos of the Park as membership premiums. We have a good supply of photos we'd be glad to share with others who can be tempted to increase their level of support.

On the Owl...

I enjoyed the nice write up about



Fifty consecutive years in lean-to #3 at Russell Pond for a week in August each season – three generations of the family celebrated this tradition begun by our parents way back when. Seen here wearing this year's t-shirt designed by BSP Visiting Artist Michael Boardmen are L to R, back row: John Mirick, Chris Mirick, Matt Main, Josh Sepe, Charlie Jacobi; front row: Cat Mirick, Susanna Mirick, Dennis Ruksznis, Abi Ruksznis, Beth Ruksznis, Barbara Bentley, and Bill Bentley.

– *Photo @Charlie Jacobi*



Celebrating the Summer solstice and honoring early women mountaineers, including the first ascent of Katahdin by a woman in 1849, five appropriately clad *Women on High* hiked to the summit in style and were rewarded by strings of pearls each at the summit! L to R at Chimney Pond: Holly Hamilton, Barbara Bentley, Marsha Donahue, Donna Gordon, and Rachel Storey. Thanks to the requisite porters not shown here.

– *Photo © Bill Bentley*

the women's hike of the Mountain that was in the BDN. Yesterday I went to The Owl. Three of our group had not climbed it before. I had suddenly realized that I had not been to Baxter since March and needed to go. When I got to the part of The Owl where it is wide open and looking at the Mountain, I stopped and said to everyone else that they should go on. I have been to the summit a few times, and I wanted some alone time with the Mountain. I sat there watching the clouds and the mountain all by myself for over a half hour - it was heavenly.

– *Shirley Ellis, Old Town, ME*

Wassataquoik Island at last...

If you are at all like me, it has taken a few days to return to normal after such a beautiful week in Baxter. Our stay is beginning to feel a little like a dream, although I try to conjure up the smell of spruce needles and the sound of water when I look at our photographs. Marcel at last got to walk along the moraine between the ponds, stay in the island lean-to, swim at the little stoney beach and watch loons dive. The weather was perfect for being near water. On our way out of the Park on Saturday morning, we bought a calendar and think the photos are wonderful, and I like way information is slipped in. But where are

Continued on p. 7

Sleuthing about Katahdin...

Sometime over the winter of 1879-1880, someone from the NY publishing firm Orange Judd Company contacted a small group of artists to help make the 60 engravings and woodcuts for a new book written by 35-year-old Thomas Sedgwick Steele, a jeweller and budding artist from Hartford, CT. (These prints would be made from 50 glass plates, 6x8 inches each, with chemicals carried and then prepared and developed on-site by the “wet process.”)

The story chronicles a month-long canoe tour made on the “flood tide” in which the author and 5 other hardy souls (including the unknown artist-photographer) encircle Katahdin via Moosehead Lake, the West Branch, Chesuncook Lake, Webster Lake, and the East Branch. (1) (The same route Thoreau had taken 22 yrs earlier!)

One of the engravers hired to make drawings for the Steele book was Truman W. Williams, who had served as a topographical engineer on the Union side of the Civil War. Although not recognized for his engravings of the Maine woods and rivers, he had earlier (1875-76) made all the illustrations for Mark Twain’s book *The Adventures of Tom Sawyer*. (2)

“The Author’s Sanctum” (the frontispiece) created by Williams encapsulates in one image the early arts of the Katahdin region. As if looking into a mirror, Williams has suggested a whimsical painting on an easel of the scene in the studio, replete with articles of travel and camping, as well as artist’s materials, camera, and writer’s desk, and finished

works of art. Steele says at the end of his introduction, “I simply desire to direct the attention of tourists, and more especially artists, to a section of Maine now but little known, but which, if once explored, will yield to them a bright harvest of pleasure and studies.”

– David Little, *Art Detective*

notes:

(1) *Canoe and Camera: A Two Hundred Mile Tour Through the Maine Forests 1880*, New York: Orange Judd Company. The story is illustrated by at least 3 illustrators and also includes an early original map of the canoe tours of the state of Maine, entitled “Moosehead Lake and the headwaters of the Penobscot River” and created by another collaborator, W. R. Curtis c.e.

(2) Barbara Schmidt’s special feature/paper “A Closer Look at the Lives of True Williams and Alexander Belford” from www.twainquotes.com found through Google’s search engine. Ironically, True Williams authored his own book, *Frank Fairweather’s Fortunes* (1890), but never received recognition for his work.

Editor’s note:

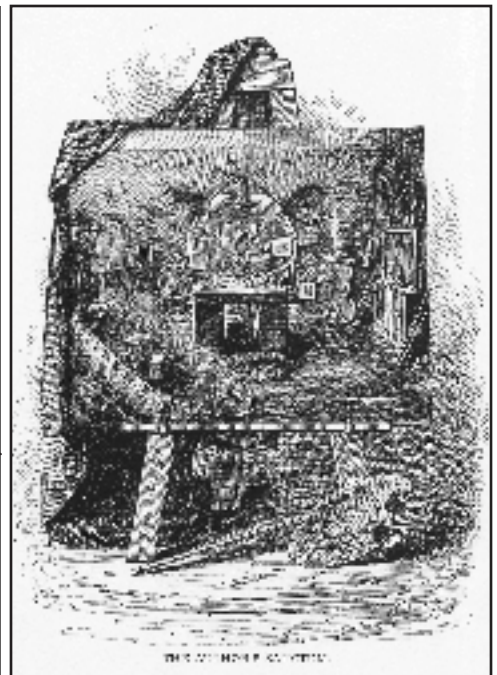
David Little is a landscape painter living in Portland. He is currently working on a book about Katahdin and the artists who have been inspired by the mountain and the region. His column will appear regularly in upcoming editions of this newsletter.

Our Readers Write.... (con. from p. 6)

the moose? We didn’t see any at all this year or last, although we saw plenty of fresh prints. I would be happy to write something for the newsletter. Do you have any suggestions?

– Jane Macaulay, *Quebec, PQ*

Editor’s note: Jane spends time each summer in the Russell Pond area and the island



“The Author’s Sanctum” created by Truman W. Williams encapsulates in one image the early arts of the Katahdin region. – Photo courtesy of the Maine Historical Society.

she refers to is in Wassataquoik Lake. And offers to write for the newsletter are most welcome!

Park boundary...

I have a Baxter question that I’m hoping you (or someone you know) can answer for me. The extreme southwest corner of the Park is township 3 range 10 (T3R10). This township has its southwest corner on the SOUTH side of the West Branch of the Penobscot River. And many maps I’ve seen show that corner of the park extending across the river. My question: is that tiny portion of the river and the infinitesimally small land on the south side of the river in Baxter Park?

– Zip Kellogg, *Portland, ME*

PS I have no motive other than curiosity.



Seen here in a wood canvas canoe and using paddles made especially for the occasion, BSP Ranger Rob Tice and his bride Sarah Hunt show good form as they set off into life together after being married on a beautiful island in Rangeley Lake on a sunny day in September. Eagles were circling the island.

– Photo © Bill Bentley



BSP Advisors and BSP Staff Dave Buccello, Mike Martin, Jensen Bissell, Spencer Meyer, Bruce Hancock, Tom Goetz, Carla Ritchie, Rick Bray, Laurie Nale, Dave Edwards and Laurie Rich
 – Photo © Laurie Rich



DUPR Feedback, please!
 Did you use a Day Use Parking Reservation (DUPR) this season? Please tell us how it worked for you and what we might do to improve the system by writing to us at:
Reservations.BSP@maine.gov

Update from the Park

by BSP Park Director Jensen Bissell

The long stretch of very nice summery weather brought many people to our door at the Togue Pond and Matagamon Gatehouses. Some of them arrived to find out that our new Day Use Parking Reservation System (DUPR) was in place and that they would have to wait in line until 7:30 AM to find out if there were any available parking slots left at Roaring Brook. The introduction of a change in Katahdin access parking policy will always mean additional work and stress at the gate, and the DUPR system was certainly no exception. Although there were some disappointed and frustrated hikers at the gate, there were also over 4,000 DUPR holders who enjoyed the assurance the DUPR provided that they would be able to reach the Roaring Brook, Abol, or Katahdin Stream parking lot and begin their day hike towards Baxter Peak. We have monitored the new system carefully and will be meeting soon with all staff involved to discuss the implementation of the system and any adjustments that may be warranted for the 2011 season.

The past summer was also a very busy one for camping with much of the Park fully reserved for the months of July and August. When we finish tallying our statistics for 2010, I suspect we will confirm that the Park was a very busy place this past summer and that use numbers were up over the past few years. We continue to receive compliments from visitors on our field and reservation staff and the reservation system, particularly the campsite availability chart on our website.

Resource Manager Now on Board!

After a comprehensive multi-step process that began in late June, the Baxter Park Authority hired Richard Morrill of Milford, ME, as Baxter State Park Resource Manager. Rick has a B.A. in Environmental Studies from Bates College and a Master of Forestry from the University of Maine at Orono. He has worked in planning, administration, and management at the UMO University Forest, Sterling College in Vermont, and as a forestry consultant. He is a member of the Society of American Foresters and serves on the Board of Trustees of The Forest Guild. We are excited to welcome Rick on board as he prepares to address a number of important challenges facing this well-regarded showplace for sustainable forest management.

Management Plan and SOP Process

Park staff has now completed listening sessions in Portland, Bangor,



Rick Morrill of Milford, ME, is the new BSP Resource Manger.

– Photo courtesy of BSP

and Presque Isle. These sessions were helpful in gathering concerns and suggestions from Park users regarding the future management of the Park. We are working now on providing a more specific process to complete a draft plan as well as posting issue prompts and forms and process for further public input on the Park's website.

BSP Advisory

The Baxter State Park Advisory Committee continues to play an important role in the policy and operational development process. Members of this group met at Trout Brook Farm for a summer team-building and volunteer effort. Thanks to a suggestion from Advisor Laurie Nale, the group worked on completing a step ramp canoe launch at the put-in on Trout Brook just above the Trout Brook Bridge at TBF.

After the work project was completed, the group was treated to a fantastic meal prepared with civil war replica cookware by Advisor Rick Bray. We had time to go over our issue list for Advisory work during the coming winter months before darkness and rain called an end to the day. The next day, most of the Advisors hiked the Horse Mountain loop before leaving for the weekend. The current Advisory is an extremely knowledgeable and active group that offers helpful, considerate, and productive advice to the Park during the policy and action development phase of administration.

Snowe Staff Visit

On August 17, I had the pleasure of hosting a group of policy and adminis-

Continued on p. 9

Continued from p. 8

trative staffers from Senator Olympia Snowe's office on a visit to the Park. The group was working through Maine conducting listening sessions and wanted to take a part of a day to visit the Park. We hiked from Daicey Pond down to Little and Big Niagra Falls, and then the group returned to Daicey to spend an hour or so on a volunteer project coordinated by Campground Rangers Andy Vietze and Charity Levasseur and Volunteer Coordinator Laurie Rich. The wildness and atmosphere of Baxter Park can have a powerful effect – even during a short visit. For several days after this event, I received emails and calls from this group thanking Park staff for this visit.

Authority Summer Tour

On August 31, the Baxter State Park Authority conducted their annual summer visit to the Park. The trip included an overflight of the Park to discuss a number of land management issues before moving to a vehicle to travel from Nesowadnehunk Field down to Caribou Pit. The Authority viewed and discussed a number of issues including the Foster Field renovations, the Nesowadnehunk Stream crossing at Daicey Pond, large culvert and bridge replacement needs in the Park, and the DUPR program. The current Baxter State Park Authority is very knowledgeable, engaged, and committed to the Park and the Trust Deeds; and we should be proud to be represented by such exemplary public servants.

SFMA Update

Our focus this summer has been to organize and conduct effective harvest operations, to continue data gathering and processing efforts on forest stands in the SFMA, and to conduct necessary maintenance efforts. After an initial period of frantic activity, we established a solid harvest plan for the summer and fall seasons, and we have been working at reviewing and selecting stands for the winter plan. Most of the planning and long-term administrative efforts had been put on hold until a Resource Manager is on board. With Rick Morrill as the Resource Manager, we will now gradually resume these efforts.

Soil Surveyors in the Park

If you noticed some US Government vehicles in the Park this summer, they were likely connected with a soil survey effort being conducted by the USDA Natural Resource Conservation Service and led by State Soil Scientist Tony Jenkins. These folks have been characterizing the Park's soils, including soils above treeline and other remote areas of the Park. This effort has been at no cost



Loon families enjoy the respect of Park visitors and make their summer homes on many bodies of water in the Park. They're heading out for the winter soon.

– Photo © Laurie Rich

to the Park outside of the provision of the work funded by the Recreational crew or volunteer lodging, and the soils Trails Program (RTP) grant successfully information obtained may be helpful in the future regarding management of the Park's road and trail system.

New Mountain Models

It appears that the effort to replace the Park's mountain model displays currently at the Visitor Center and Katahdin access campgrounds is headed for possible completion this winter. This effort has been carried and funded by the Friends of Baxter State Park. The new models will be about the same size as the current models but will depict most of the southern half of the Park south of Wassataquoik Lake instead of only the immediate area around Baxter Peak and the Great Basin. It is our hope that the expanded model area will help visitors realize the many hiking opportunities that exist in our large landscape and will help them see more clearly where they are in relation to other trail systems around them.

RTP Trails Work

The Park trails crew and Maine Conservation Corps crews have been very busy in the Park this year implementing

the work funded by the Recreational Trails Program (RTP) grant successfully secured by the Friends of Baxter State Park early in 2010. This grant provided funding for work on the Helon Taylor, Marston, Saddle and Abol Trials as well as the replacement of the upper and lower Saddle Brook bridges. This grant, along with other support of the FBSP, has been instrumental in helping the Park meet the objective of increasing the annual trail maintenance work applied to the Park's 215+ miles of hiking trails.

Need reservations?

Go to the Baxter State Park website at baxterstateparkauthority.com

Under Camping and Reservations, click on CAMPSITE AVAILABILITY to plan your trip. Then call or write Park HQ's.

Check on up-to-date trail conditions by calling the newly established Hiker Info Line at 207-723-4636.

Day use parking reservations are now available on Park website or at Park HQ by calling 207-723-3877 (DUPR).



The BSP Authority was treated to aerial views such as this as they toured the Park by air. North Basin and Blueberry Knoll are in the foreground with South Basin in the distance. Note Basin Ponds in lower left.

– Photo © Bill Bentley

Friends of Baxter State Park
P.O. Box 609
Union, ME 04862-0609

We're looking for new Friends!

_____ \$1,000	Governor Baxter Society
_____ \$ 500	Katahdin Club
_____ \$ 250	Knife Edger
_____ \$ 100	Hamlin Peaker
_____ \$ 50	Sponsor
_____ \$ 30	Family
_____ \$ 25	Individual

Please make checks payable to Friends of Baxter State Park. Dues and contributions are tax deductible to the extent provided by law. Send to

**Friends of Baxter State Park,
P.O. Box 609, Union, ME 04862-0609**

Friends Website: www.friendsofbaxter.org

Thank you!

Friends Get Together

Walks in the Park, VIP and Volunteer Projects, Trails End Festival, and Common Ground Fair

Do you want to meet other members of Friends of Baxter State Park? Consider signing up for a Walk in the Park next season. We make reservations at two different campsites for up to twelve at each. Geology, forest management, and fly fishing may be featured in 2011 Walks. Or combine your own trip to the Park with one of the many volunteer opportunities. And you are always invited to help staff the FBSP booth at a fair or festival.

Photo at left: FBSP Board members Charlie Jacobi and Henry Beeuwkes sport yellow MYWLP t-shirts at Common Ground Fair this year. – Photo © Charlie Jacobi



River crossings like this are part of the deal when hiking in the Park's backcountry and can be fun on a sunny summer day, but water levels and temperatures can change rapidly depending on weather and season. Here the Maine Youth Wilderness Leadership Program participants make quick work of crossing the Wassataquoik Stream.

– Photo courtesy of MYWLP 2010 @ <http://www.photoshop.com/users/mywlp10/>